

Project

COGE

Architects

AUDE ARCHITECTES

Address

Estaimpuis

Programme

The first real estate/bank/insurance complex project carried out in CLT (cross-laminated timber) in the region, this project was born from the desire to create a simple volume, completely open to the outside allowing maximum enjoyment of the views and bringing in a maximum light in these spaces, while ensuring privacy and security for staff.

About

The wood material, used here in a post-beam system, evokes prefabricated industrial architecture while bringing the warmth specific to its aesthetics. The constructive elements are underlined by the technical aspects, such as ventilation and lighting which remain visible maintain maximum ceiling height. The glass elements align with the layout of the flooring and the wooden columns. Articulated boxes and partitions organize the interior functions while maintaining the spatial and structural reading of the project.

Typology

Offices (include mixed use)

Status

Built

Conception

2013

Aude

9/1 Boulevard du Roi Albert  
7500 Tournai

Tél : +3269445001

info@aude-architectes.be  
www.aude-architectes.be

OTHER PROJECTS :

CABA  
- 2009 2009  
- Hoves

BUPA  
- 2008 2008  
- Hoves

LEMA  
- 2008 2010  
- Cysoing

SPOR  
- 2010  
- Rebecq



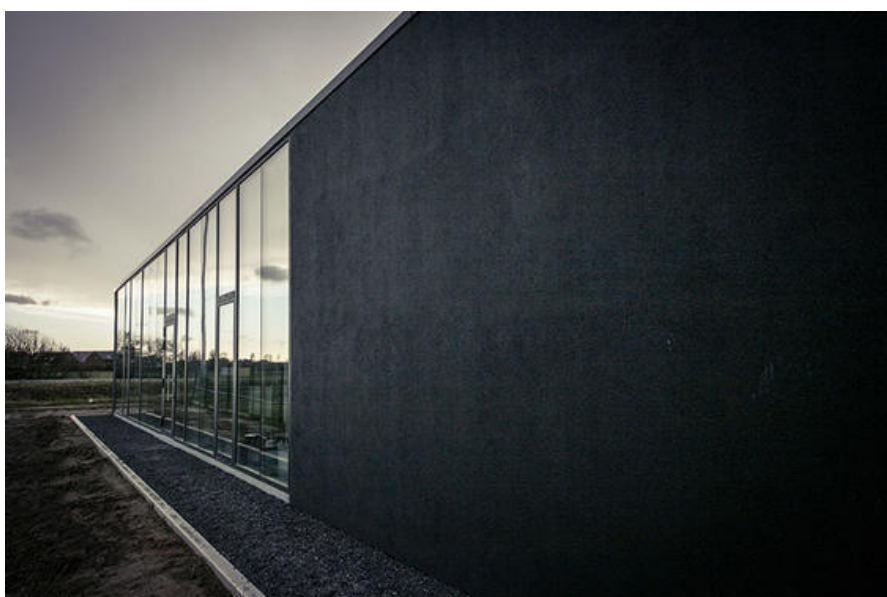
Â© Benjamin Bulot



Â© Benjamin Bulot



Â© Benjamin Bulot



Â© Benjamin Bulot



Â© Benjamin Bulot