

Project

THE CRACK

Architects

ALIVE ARCHITECTURE

info@alivearchitecture.eu

Address

Avenue Marce Devienne, 1200 Bruxelles

OTHER PROJECTS :

Programme

The approach of the project is to 'work with' the existing given: the landscape, the materials and the actors. As such we transformed an unused tennis court into a garden of curiosities and chose to work with material that we found and collect on the site.

Dardaar - A Happy Place
- 2021 2022
- Bruxelles

We organized a series of workshops with the inhabitants to draw the shape, plant the crack, co-design the objects and finally place them collectively in order recall the past of the site.

Place de Houf
- 2019 2019
- Bruxelles

About

Joseph Beuys first introduced the term 'social sculpture' in the 1960's. He believed that art has the potential to transform a society and that 'everyone is an artist'. From that statement we believe that art as a process of co-production can stimulate the creative potential of each and everyone to serve a collective project.

Parckdesign 2014: Parckfarm
- 2013-2014
- Molenbeek-Saint-Jean

The approach of the project is to 'work with' the existing given: the landscape, the materials and the actors. As such we transformed an unused tennis court into a garden of curiosities and chose to work with material that we found and collect on the site.

Public Space 4 Her
- 2023-2024 2024
- Bruxelles

We organized a series of workshops with the inhabitants to draw the shape, plant the crack, co-design the objects and finally place them collectively in order recall the past of the site.

Typology

Culture

Status

Built

Conception

2019

Delivery

2022

Client

SLRB - Le programme 101e%

Total budget

200.000



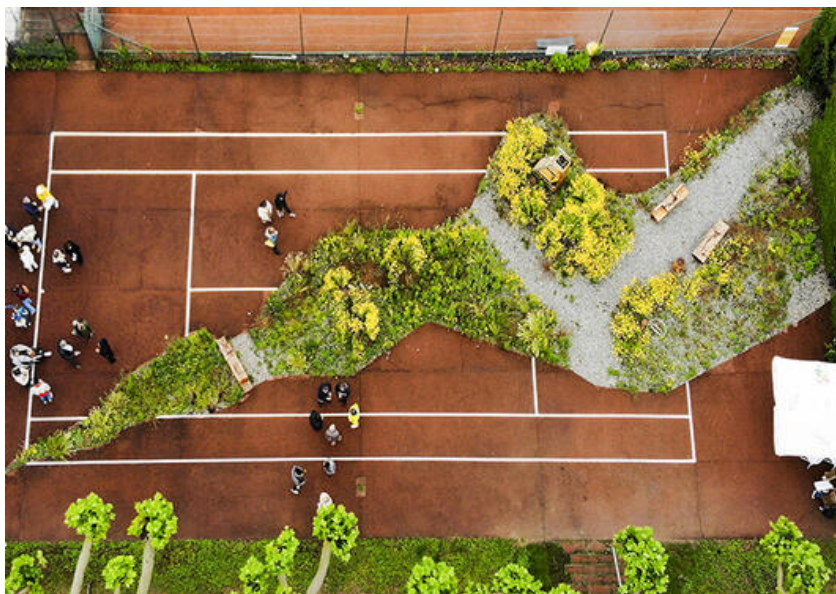
Â© Alive Architecture



Â© Alive Architecture



Â© Alive Architecture



Â© Alive Architecture