

Project

WORKSHOP

Architects

AURÉLIE HACHEZ ARCHITECTE

Address

Chaumont-Gistoux

Programme

Rénovation of a single floor burned family house

About

This shoemaker's workshop located in the countryside near Louvain-la-Neuve was converted into a single family home. Built in 1950, the central building was supplemented over the years with annexes to the west and the east. This wooden building made of bits and pieces has the appearance of a 'homemade woodstock cottage'. On the contrary, the whole house is semi-buried and leans against a sturdy supporting brick wall conferring a sense of stability to the construction. Originally covered with coating, this wall was exposed during the renovation to valorize its constructive character. Following a fire in 2012, the roof had to be rebuilt. Despite limited budget, the goal was to make the most of the house's volumes. The rooftop was slightly heightened and original elements of the framework were removed to restore the importance of the central space as a «foyer». The night time spaces were organized in the annexes flanking this large central volume. In the west, the lobby and the garage were also lowered by 60cm to add a floor under the roof. Its reduced height makes this space including a bedroom and a music room cozy and flexible. To the east, two other bedrooms were placed, one with a mezzanine.

37A, square du Solbosch
1050 Bruxelles

Tél : 0032 472 40 67 33

aureliehachez@gmail.com

OTHER PROJECTS :

Oriel
- 2013 2013
- Bruxelles

Herringbone
- 2012 2012
- Bruxelles

Stables
- 2013 2014
- Bruxelles

L'Ermitage
- 2015 2018
- Bruxelles

Typology

Private houses

Status

Built

Conception

2013

Delivery

2013

Total budget

95 000

Area

90



View on the central volume
Â© Maxime Delvaux



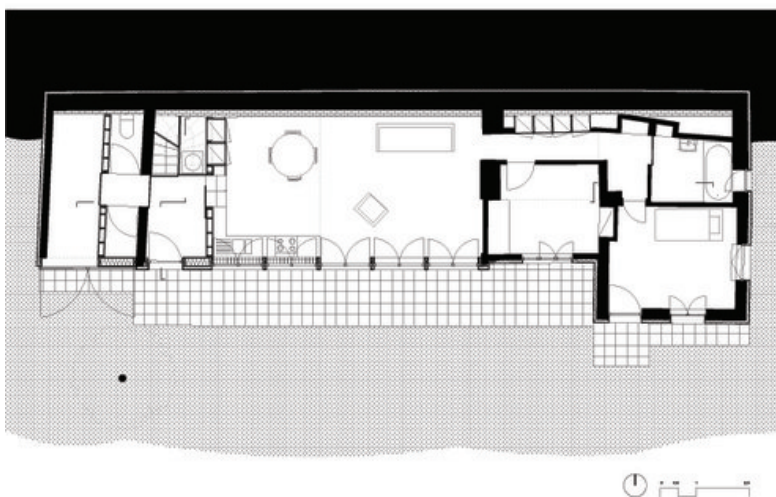
View from living spaces on the volume created for the new floor
Â© Maxime Delvaux



Inside view of the new upper floor
Â© Maxime Delvaux



Inside view of the hall
 Â© Maxime Delvaux



Plan of the ground floor
 Â© AurÃ©lie Hachez Architecte