

## Project

# SCREEN

## Architects

AURÉLIE HACHEZ ARCHITECTE

## Address

Bruxelles

## Programme

Apartment renovation

## About

This 1936 apartment is configured into an L-shape. The service rooms are the link between the street side daytime spaces and the court side night spaces. The surface of the service area is disproportionately large for our current lifestyle. The idea was therefore to re-attach them to living spaces by removing a load-bearing wall and substituting it with a steel structure, thereby creating an opening. For reasons of cost, the clients decided not to take down the wall, but rather to use the service rooms as their kitchen so as to place it nearer to the living spaces. The corridor leading to the night spaces brings character to the whole apartment due to its length and its typically Brussels style. As this corridor has an opaque exterior wall, interior partitions were made transparent with steel sliding curtain-walls so as to let light from the courtyard enter into the corridor.

## Typology

Private houses

## Status

Built

## Conception

2013

## Delivery

2013

37A, square du Solbosch  
1050 Bruxelles

Tél : 0032 472 40 67 33

aureliehachez@gmail.com

## OTHER PROJECTS :

### Oriel

- 2013 2013  
- Bruxelles

### Herringbone

- 2012 2012  
- Bruxelles

### Workshop

- 2013 2013  
- Chaumont-Gistoux

### Stables

- 2013 2014  
- Bruxelles



Hall

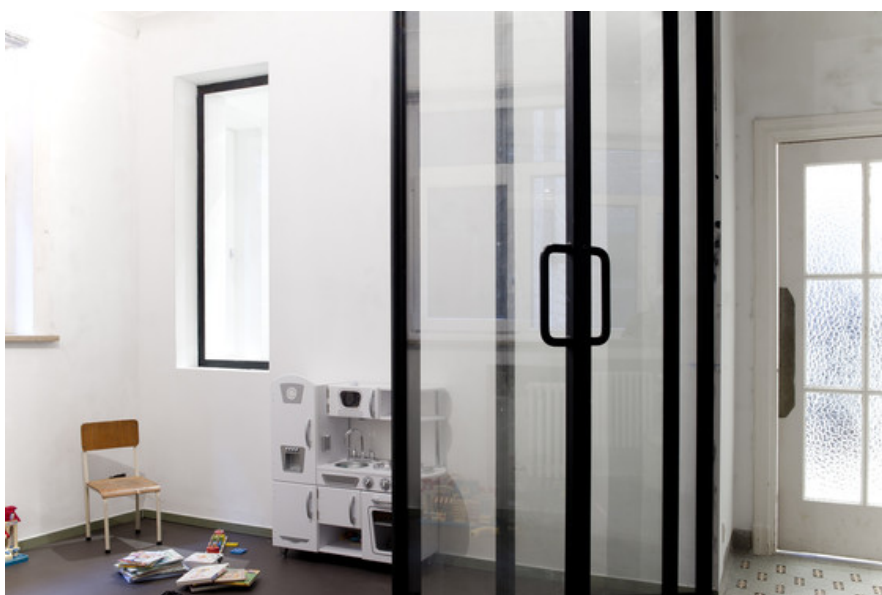
Â© Delphine Mathy



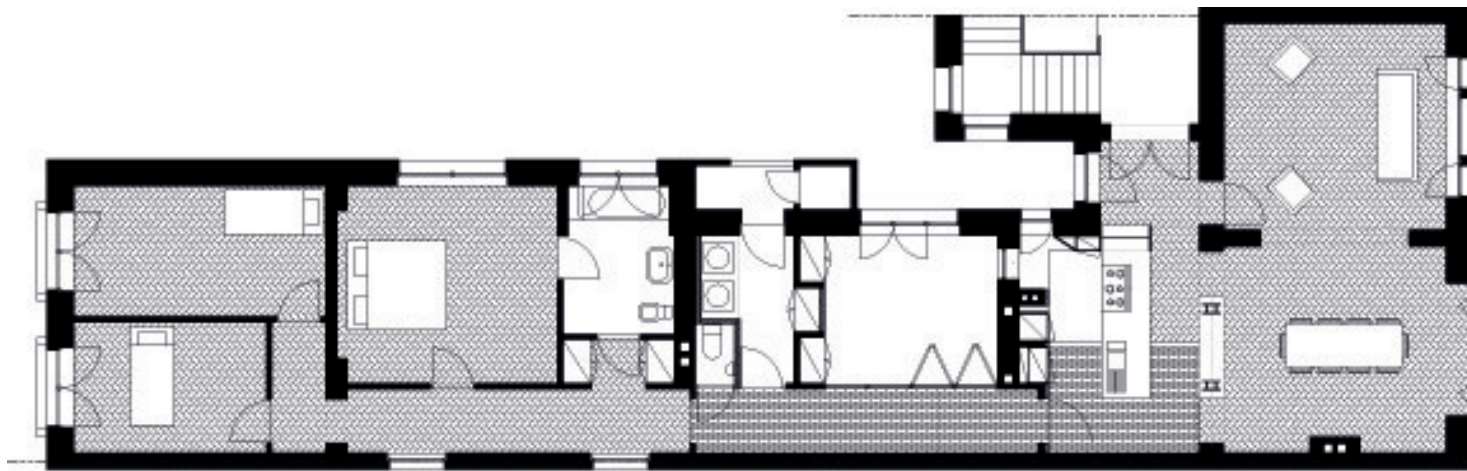
Kitchen  
Â© Delphine Mathy



Hallway  
Â© Delphine Mathy



screen  
Â© Delphine Mathy



Plan R+1  
Â© Aurélie Hachez Architecte