

Project

AIME-DUPONT NURSERY AND HEALTH CENTER

chaussée de Waterloo 1253
1180 Bruxelles

Architects

B612 ASSOCIATES

Tél : 32 2 732 96 93
Fax : 32 2 735 05 92

Address

Rue des Champs 67, 1040 Etterbeek

Programme

Demolition of existing buildings and construction of a passive nursery for 160 children and development of the health center in Etterbeek

limei.tsien@b612.be
<http://architecte.b612associates.net>

OTHER PROJECTS :

About

Inserted in the heart of a rare green block in La Chasse district, this 160-bed day care center proposes an urban connection and a revaluation of the park and its access. Its low volumetry and the extension of the double row of flowering trees in the park, balance the conviviality and legibility of the latter, the habitability of the building on the street and the new visual and spatial relations of the project.

The nursery is organized around a luminous central atrium that amplifies its spaces and its relationship to the outside. This open heart develops over 3 levels, bathing each floor in abundant light and creating a meeting and activity space for its 12 sections and a spacious circulation that serves the different functions.

The volume is hollowed out at each level to frame privileged views of the gardens, freeing up ample outdoor play spaces in contact with the sections, creating protected spaces in the recesses, and ensuring generous light intakes.

Viaduc nursery and cafeteria
- 2005 2009
- Bruxelles (Ixelles)

Dolez - Housing units
- 2005 2010
- Uccle

Charmille-Schuman
- 2011 2020
- Bruxelles

Bruyn - Nursery and Eco-housing
- 2008 2012
- Bruxelles

Typology

Education

Status

Built

Conception

2016

Delivery

2020

Client

Commune d'Etterbeek

Total budget

8 972 146

Stability

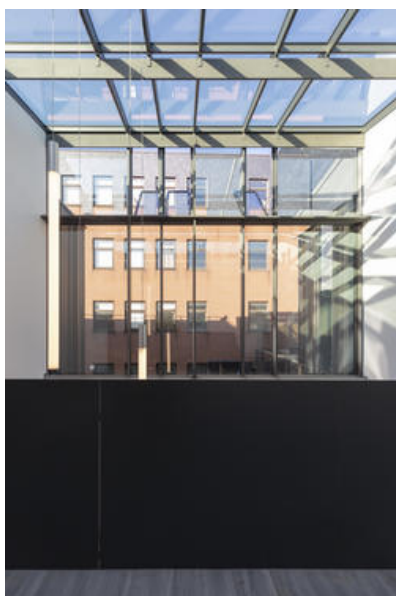
Ney & Partners

Special techniques

Mk Engineering



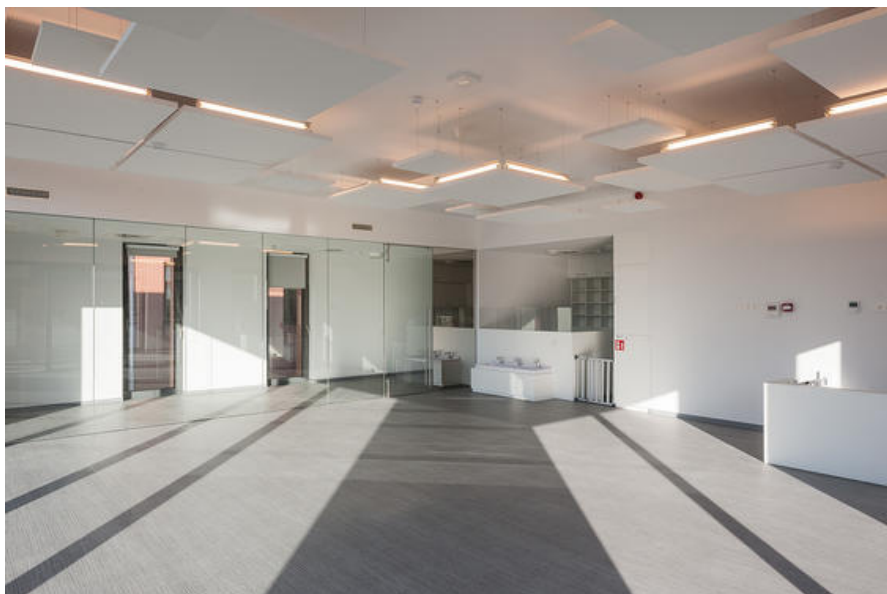
View of the nursery from the park
Â© B612 Architectes



Â© Andrea Anoni



Â© Andrea Anoni



Â© Bernard Boccara