

Project

ETS DEPAIRON

Architects

BAUMANS-DEFFET, ARCHITECTURE ET URBANISME

Address

Rue de Limbourg, 4800 Verviers

Programme

Founded in 1896, the Depairon company has never left the rue de Limbourg.

Over the decades, the washhouse of a few square meters has become an industrial flagship specializing in the rental and maintenance of work clothes. More than 160 people work today on a 24,000m² site. On its own, the Depairon company participates in the dynamic preservation of a street with an industrial past. To the rationality of relocation, she prefers to grow

About

The Depairon Company is a family business. The fifth generation is now at the head of the company. Risk measurement and intuition characterize decision-making concerning short, medium and long-term investments. Any investment is the result of shared strategic thinking. The objective is to sustain the activities of the company. Spatial growth based on an additive process suggests that there may be a time lag between acquiring an available space and using it. Once acquired, a space often finds a temporary assignment before undergoing a final phase of transformation. In general, the process mentioned extends the life of potentially empty buildings. The existing built heritage can be the subject of a complete or partial reconditioning. Surprisingly, the general plan of the factory also retains traces of the historical plot.

The aesthetic question seems inseparable from the additive process. The permanent transformation of spaces inevitably leaves temporary or permanent traces of partial resolutions.

Typology

Industry

Status

Built

Conception

2008-2018

Client

Depairon s.a



rue Bois l'Evêque, 26
4000 Liège

Tél : 32 4 229 25 50
Fax : 32 4 226 40 22

info@baumans-deffet.be
www.baumans-deffet.be

OTHER PROJECTS :

Sainte-Élisabeth Nursing home
- 2007 2010-2012
- Herve

Logis social headquarters
- 2005 2008
- Liège (Chênée)

- 2008 2011
- Dison

- 2007 2008
- LIEGE



Â© Alain Janssens



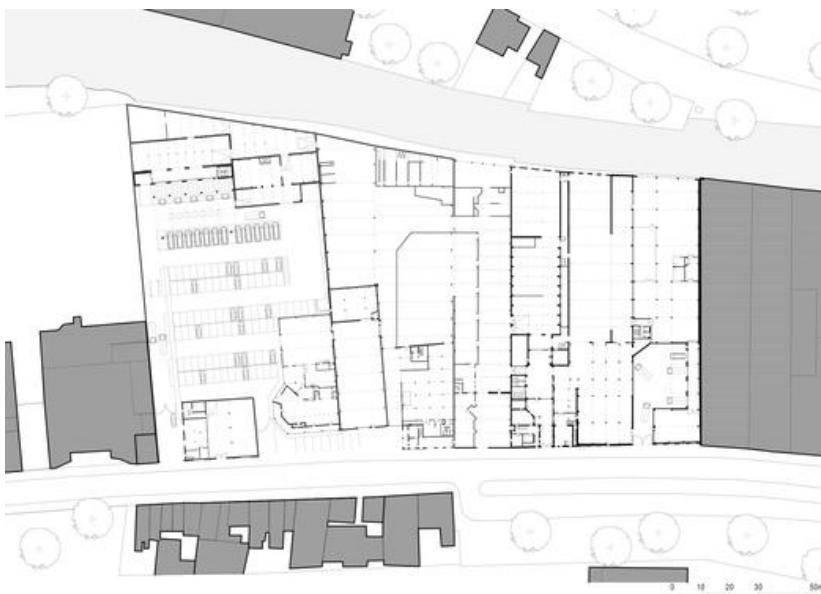
Â© Alain Janssens



Â© Alain Janssens



Â© Alain Janssens



Â© Baumans-Deffet, Architecture et Urbanisme