

## Project

# N-HOUSE

## Architects

BINARIO ARCHITECTES

## Address

Liège

## Programme

The project consists of a family house nearby the center of Liege. The plot is located in a highly-built street but it is open from the back side to an exceptional rural landscape.

## About

Working between party walls arises 2 fronts: the street side and the garden side. The design tries to reduce the boundaries between « front » and « back » and get rid of it. Street and garden communicate with views. The half-level system strengthens this communication between rooms. Implemented with a glass roof, the concrete stairs become the dynamic heart that enlightens the house. The façade materials distinguish the bricks from the wooden cladding of the excavated alcoves. The front façade is sober and massive while the back façade is animated by alternation of plans. The alcoves make the relation with the exceptional surrounding adjoined to the garden.

## Typology

Private houses

## Status

Built

## Conception

2010

## Delivery

2013

23, Quai Mativa  
4020 LIEGE

Tél : 04 344 53 00

info@binarioarchitectes.com  
www.binarioarchitectes.com

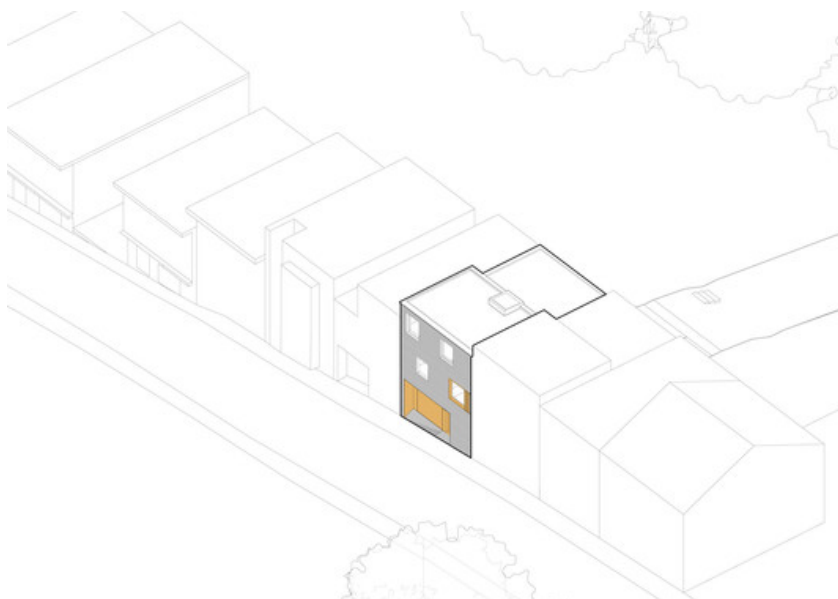
## OTHER PROJECTS :

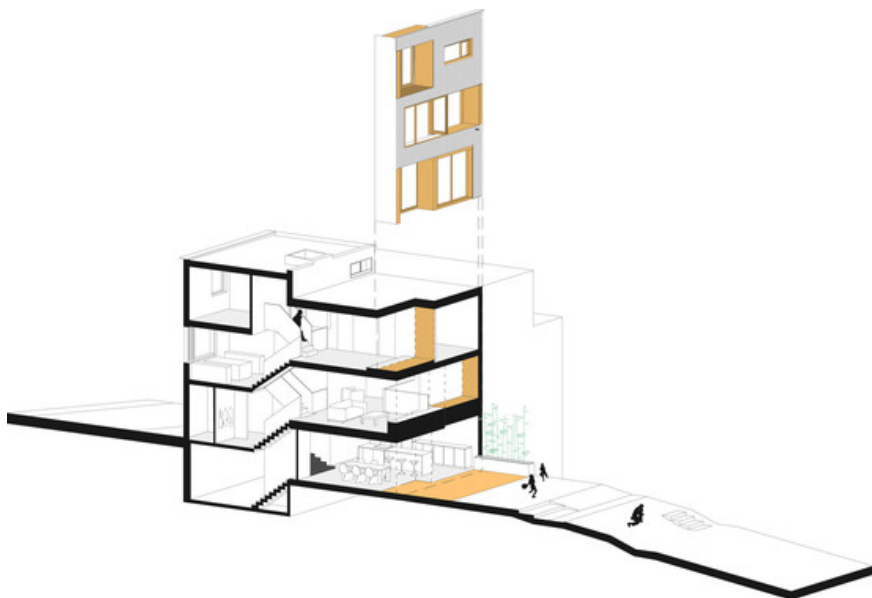
5 Social housing units low-energy construction, Jupille.  
- 2006 2015  
- Jupille

Water mill Paix Dieu, Amay.  
- 2005 2013  
- Amay

Visitor Center in the mill of Villers-la-ville Abbey  
- 2010 2016  
- Villers-la-Ville

12 Social Housing in Stavelot  
-  
- Stavelot





Â© Binario architectes



Â© Binario architectes



Â© Binario architectes



Â© Binario architectes