

Project

TOWN PLANNING CENTER

Architects

CLERBAUX PINON

Address

PLACE POELAERT, 1000 BRUXELLES

Programme

Space for information, dialogue, debate and communication for all matters relating to Planning and urbanism.

About

Town Planning Center project : a symbolic place and building.

A connecting element between the upper quarter and lower quarter of the city:

- A functional link: allowing the integration of the existing elevators

- A visual link: the lower part of the city is reflected on the polished surface, visible from the upper town and vice versa; an array of breathtaking views from the building of the House of Urban Affairs towards avenue Louise on one hand, and lower part of the city on the other.

Its reference to the Atomium (surface type), this unusual, bright and eye-catching object, suggests its potential to become a prestigious landmark.

Typology

Culture

Status

Concept proposal

Conception

2011



Chaussée de La Hulpe, 177/5
1170 Bruxelles

bclerbaux@acpgroup.be

OTHER PROJECTS :

SMART CITY IN VILLERS LA VILLE

- 2010
- VILLERS LA VILLE

RENOVATION OF A FORMER BREWERY AND BUILDING OF ITS NEW EXTENSIONS

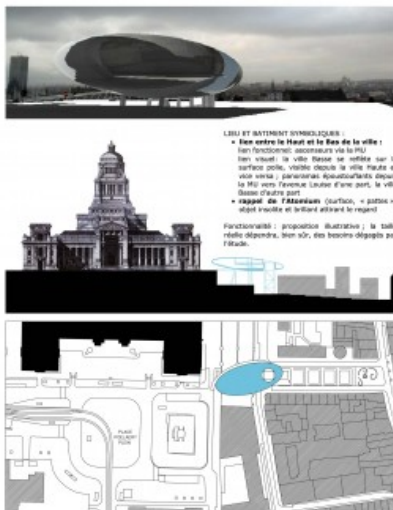
- 2005
- NIVELLES

A "RUE NEUVE" IS POSSIBLE

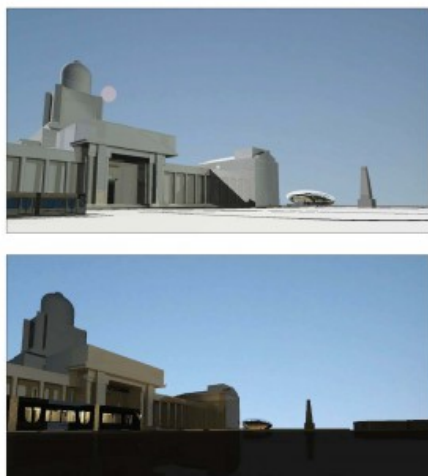
- 2011
- BRUXELLES



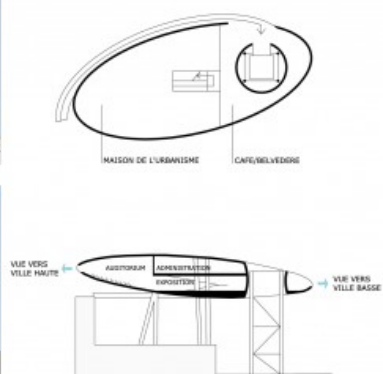
Â© CLERBAUX PINON



À© CLERBAUX PINON



Fonctionnalité : proposition illustrative ; la taille réelle dépendra, bien sûr, des besoins dégagés par l'étude.



À© CLERBAUX PINON