

Project

NEUILLY

Architects

DEV-SPACE

Address

Neuilly

Programme

Logement

About

A 20 m2 apartment in Paris is designed to find the right proportion between openness and subdivision. The first allows to achieve a sense of vastness, but risks creating a flexible space that requires constant readaptations to be used. The second is a functional necessity for certain domestic uses, but risks fragmenting an already limited space into claustrophobic components.

In the resulting design, separations become situations of interaction through a buffer zone, itself containing storage, seating and kitchen facilities. All aspects of living can be experienced fully in the limited space, without resorting to complicated and constraining modalities of constant space conversions.

Typology

Private houses

Status

Built

Conception

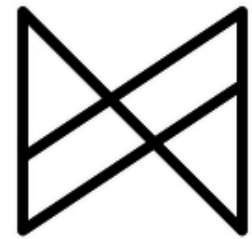
2015

Delivery

2016

Area

20



**DEV**  
space

Rue du Chimiste 34/8  
1070 Anderlecht

dev@dev-space.eu  
<http://www.dev-space.eu>

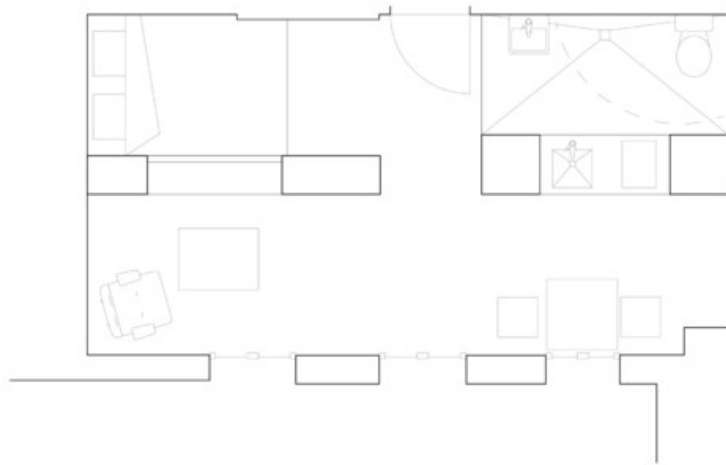
OTHER PROJECTS :

Stay Radical  
- 2014 2014  
- Venise

B&M  
- 2012 2013  
- Paris



Â© Nico Neef



Â© DEV-space SPRL



Â© Nico Neef



Â© Nico Neef



Â© Nico Neef