

Project

SALT WAREHOUSE

Architects

GOFFART POLOMÉ ARCHITECTES

Address

site administratif du District d'Houffalize ? Fontenaille 7, 6661 Houffalize

Programme

Located in the heart of the Belgian Ardennes, in a rural area where forests of coniferous and grasslands shape the landscape, the project of a salt storage warehouse is meant to echo agricultural barns structuring the horizon. In that respect, the warehouse is inspired by a traditional volumetry whose codes are reinterpreted in a neo-vernacular approach, transcending ancestral building principles of sylvicultural hangars, a common typology in the region.

About

The important stature of the project induced by its use becomes a singular silhouette at the scale of the site. In that respect, the materiality is intended to soften the impact of the volumetry on the landscape by dealing with the transparency of the upper part of the building. Facades are covered with polycarbonate panels in a diaphanous approach which plays on the ambiguity of its transparent and reflexive characteristics: its presence on site is felt as much as from the inside than the outside similarly to a stained-glass.

By night, when snow covers the plain, the building lights up and acts as a reassuring lantern into the dark. In the middle of the storm, the hangar illuminates the site following the ballet of dispersion vehicles.

From a building point of view, the project spontaneously reveals itself in a frugal sincerity ? a warehouse is above all a sheltered structure. By echoing the sylvicultural character of the region, the wooden structure reveals itself both from the inside and the outside reinforcing the project integration into its context. Beyond the architectural bias, the wood also refers to a practical answer. Indeed, its natural proprieties make it less sensitive to an environment as corrosive as storing salt is.

Typology

Transport

Status

Built

Conception

2019

Delivery

2020

Client

Région Wallonne - Service Public de Wallonie (SPW)

Total budget

265.000

Per square meters

613,43

Area

432



GOFFART POLOMÉ ARCHITECTES

Rue Edouard Baillon
6224 Wanfercée-Baulet

Tél : 071 41 81 53

Fax : 071 41 81 53

info@goffart-polome.com

www.goffart-polome.com

OTHER PROJECTS :

City Hall Eghezée

- 2013 2017

- Eghezée

Villa des Communes

- 2012 2013-2014

- Court-Saint-Etienne

PINCHET HOUSE

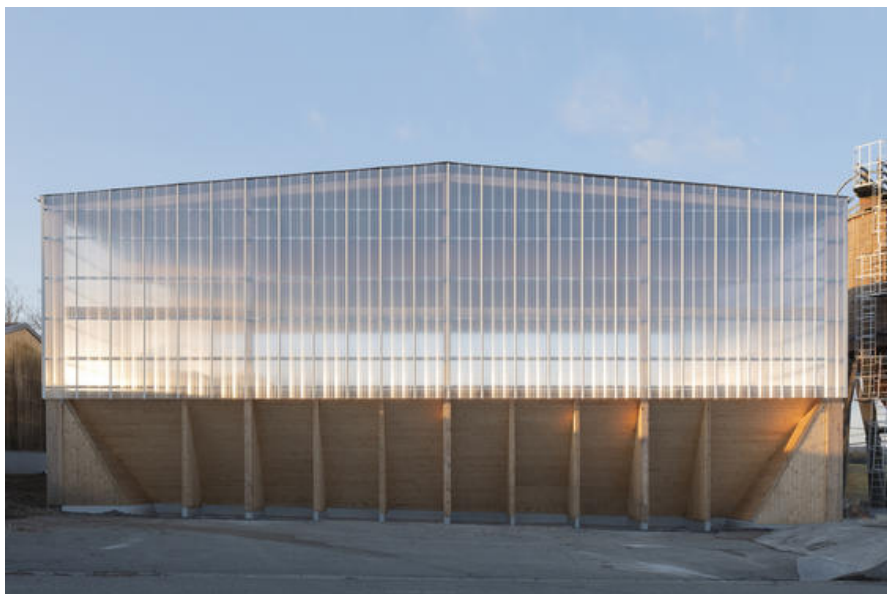
- 2012 2013-2014

- Villers-la-Ville

Housing

- 2010 2013

- Auderghem



Â© Antoine Richez



Â© Antoine Richez



Â© Antoine Richez



Â© Antoine Richez