

Project

## STREET GRAY 180-198

Architects

GS3 ARCHITECTES ASSOCIÉS

Address

rue Gray 180, 1050 Ixelles

Programme

2 studios PMR  
2 Apparts 1 Ch  
4 Apparts 2 Ch  
3 Duplex 3 Ch  
3 Duplex 4 Ch

Typology

Housing (include mixed use)

Status

Built

Conception

2007

Delivery

2009

Client

Commune d'Ixelles

Total budget

4.142.567,77

Per square meters

2500

Area

1654

Stability



Boulevard des Invalides 81  
B-1060 Bruxelles

Tél : +32 2 201 93 56

info@gs3.be  
www.gs3.eu

### OTHER PROJECTS :

Gymnasium  
- 2009 2010  
- Auderghem

Studies  
- 2008  
- Bruxelles

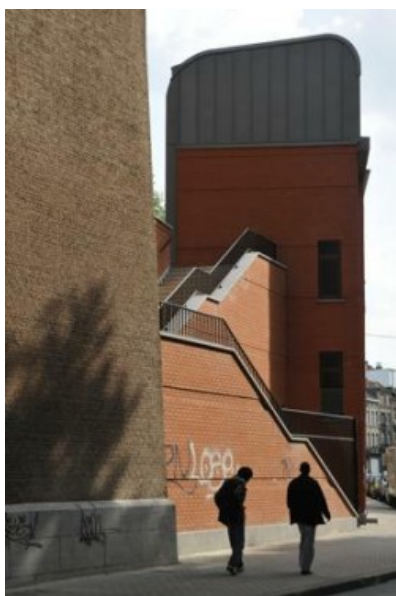
Louise Centre  
- 2011  
- Bruxelles



Back elevation  
Â© GS3 Arch Ass



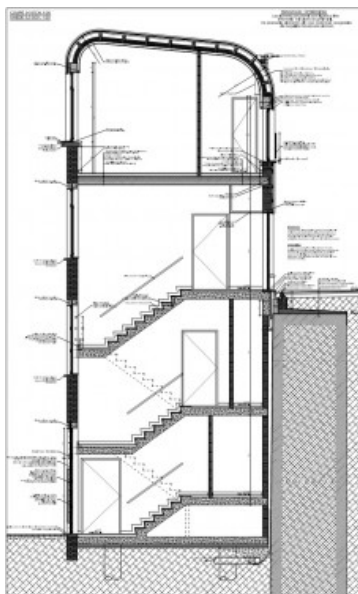
Â© GS3 Arch Ass



Â© GS3 Arch Ass



Â© GS3 Arch Ass



Â© GS3 Arch Ass