

Project

ARSONIC

Architects

H&V HOLOFFE-VERMEERSCH ARCHITECTURE

Address

rue de Nimy, 138, 7000 MONS

Programme

Renovation of the Ancienne Caserne des Pompiers (Former Fire Station) for the fitting-out of a place dedicated to sound art and contemporary music.

About

Firstly, because it contains successive traces of the palimpsest of urban Mons, the main body of the existing barracks have been conserved and its obsolete annexes removed. This allows the emergence of a multi-sided puzzle setting off the porte de Nimy:

- A northern fragment along the inner ring +
- A main body that is strategically preserved +
- An entirely terraced intra-block fringe.

The second concern was to find an architectural language that conveys the performance of a mostly acoustic project or how to first and foremost generate a first minimum amplitude of 4000m³ that fits in with the context.

With this handmade urban addition, Arsonic includes a room for unamplified music of 280 places surrounding an atypical central stage, a rehearsal room for a quartet, and a place for sound mediation called the chapel of silence. For these areas, no ostentatious decor, but a geometry and materiality purely at the service of sound.

The outer shell adopts the same attitude. On the façade overlooking the public space, Arsonic sets out, via its perforated skin, to react literally as an absorber of urban noise. Without preliminary aesthetics, before a multi-layer system including an absorbent layer, the apparent siding has been pierced with a pattern of sequential rhythms similar in this case to those of a MIDI file.

rue des Robiniers 127B
7024 Mons

Tél : +32 65 84 48 12
Fax : +32 65 59 58 14

holoffe.vermeersch@hv-architecture.be

OTHER PROJECTS :

Rural workshop
- 2004 2007
- Anseroeul

ESPLANADE
- 2004 2007
- ATH

NEGUNDO
- 2008 2011
- TOURNAI

Extension of the Francque house
- 2010 2011
- BOUVIGNIES

Typology

Culture

Status

Ongoing building work

Conception

2010

Delivery

2015

Client

Fédération Wallonie-Bruxelles

Total budget

4.300.000

Area

1.900

Architects

H&V + L. Niget

Stability

Be greisch

Special techniques

Be greisch

Acoustic

Khale Acoustics

Scenography

Architecture et Technique

Artists

Mathieu Lehanneur

EO Design



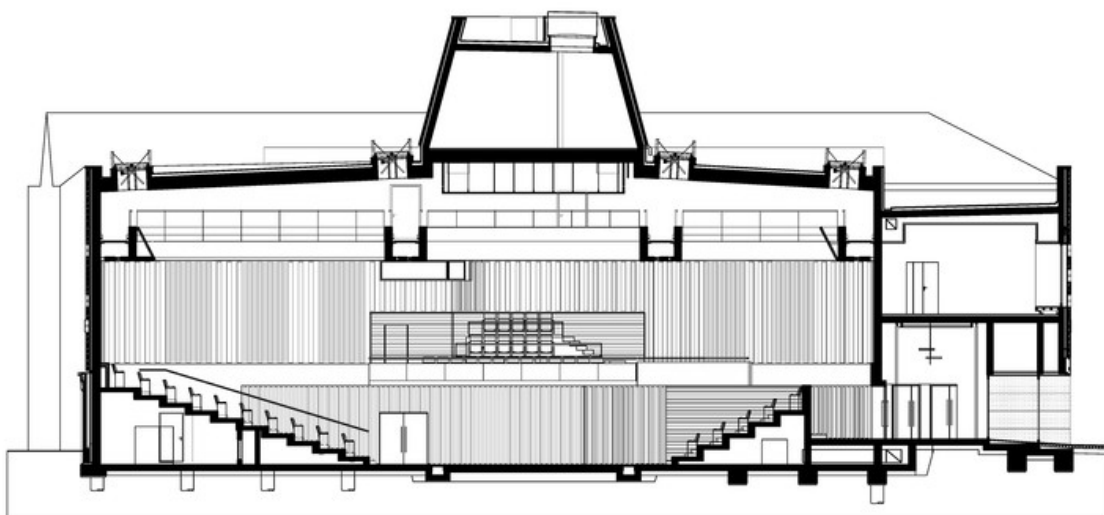
Â© Cathy Suinen



Â© H&V Holoffe-Vermeersch Architecture



Â© H&V Holoffe-Vermeersch Architecture



Â© H&V Holoffe-Vermeersch Architecture



Â© Cathy Suinen