

Project

INSULA

Architects

MDW ARCHITECTURE

Address

chaussée d'Anvers , 1000 Brussels

Programme

107 apartments, 3 shops and 93 parkings spaces

About

As part of the wider revitalisation of the 'Quartier Nord' of Brussels, INSULA features 107 flats, 3 shops and underground garage with 93 parking spaces. Its footprint, height and perforated metal skin respond to the very urban surroundings. Horizontally, the volume has been refined on the ground floor and at the recessed penthouse level, and highlighted groups of windows and terraces help breaking up the regular pattern of the façades. On the rear front, rectangular frames provide more intimacy to the bedrooms by protecting their windows from viewers from nearby office towers.

Typology

Housing (include mixed use)

Status

Built

Conception

2004

Delivery

2011

Client

Thomas & Piron ? FORTIS REAL ESTATE pour la Ville de Bruxelles

Total budget

10.000.000

Area

14.000

MDW ARCHITECTURE

Avenue de l'Armée 82a
1040 Bruxelles

Tél : +32 (0)2 428 73 76

mdw@mdwarchitecture.be
www.mdw-architecture.com

OTHER PROJECTS :

Savonnerie Heymans
- 2005-2008 2011
- Bruxelles

Le Lorrain
- 2006 2011
- Molenbeek-St-Jean

Police Headquarters & extension of
Charleroi Danses - Charleroi
- 2010 2014
- Charleroi

Cross House
- 2011 2011
- Ixelles



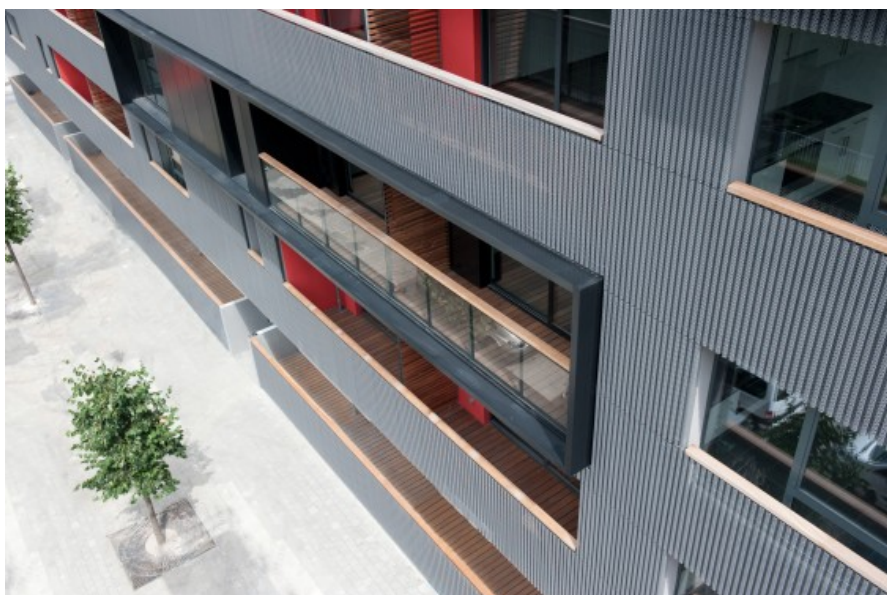
Â© MDWARCHITECTURE



Â© MDWARCHITECTURE



Â© Filip Dujardin



Â© Filip Dujardin



Â© Filip Dujardin