

Project

ETTERBEEK RAILWAY STATION

Architects

MULTIPLE ARCHITECTURE & URBANISM

Address

1050 Bruxelles

Programme

Renovation of the station and its surroundings.

About

The project explores mobility and consumption practices with the goal of increasing intensity, proximity, and sustainability. This new approach to mobility necessitates a shift towards a mixed transport concept, managing transitions in scale and modes. It positions the station hub as an objective.

Thus, the station asserts itself as a structuring element in the city through an urban landmark, an intermodal station, and a service station. This elevates the station beyond a mere object of consumption and its strictly functional role, transforming it into a genuine daily life element?a link between neighborhoods and users, embodying the concept of proximity urbanism.

The project comprises three urban figures, each linked to specific uses and mobilities:

- The forecourt's public space serves as a connection between the station and the city, integrating the station into the Brussels ring road's public space network.
- The intermodal hub slides under the roof structure and becomes the station, directing various mobility flows from this space.
- The garden connects to the university campus and forms part of the Woluwe valley.

The circular volume serves as the primary articulation of the intermodal hub: it guides flows, offers an information space visible from the street, monitors the activity of the forecourt, integrates a waiting room oriented towards the platforms, and accommodates a concession serving all users.

Typology

Transport

Status

Unbuilt

Conception

2020-...

Avenue des Gaulois 3
1040 Bruxelles

Tél : +32 2 771 79 01

info@multiple.be
<http://www.multiple.be>

OTHER PROJECTS :

Jerusalem
- 2006 2009
- Schaerbeek (Brussels)

Sterpenich
- 2010 -
- Sterpenich

Ostende KA1 school
- 2004
- Ostende

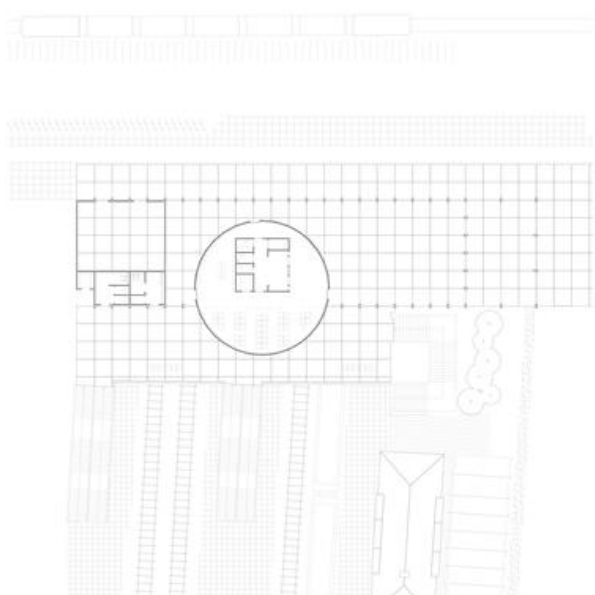
Hélécine nursery
- 2012
- Hélécine



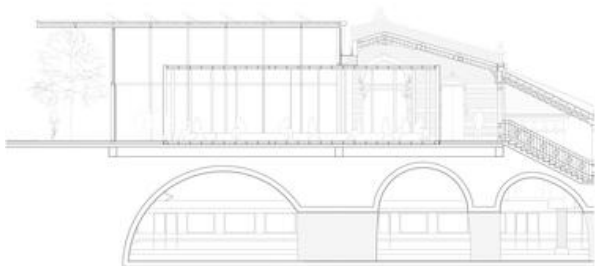
Â© BOCO studio



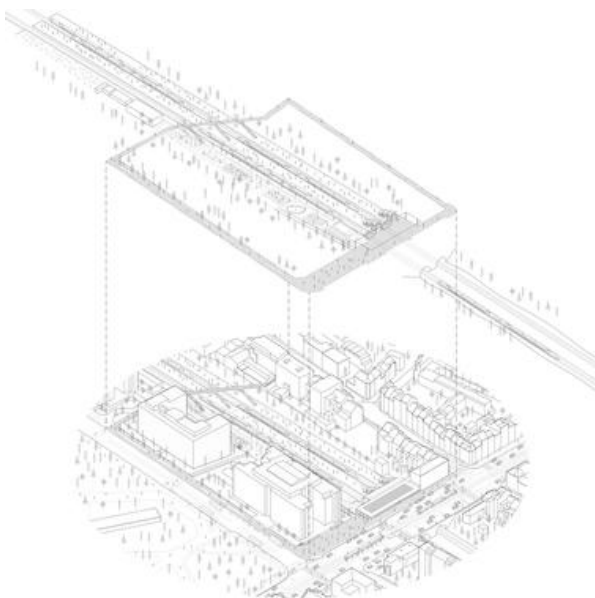
Â© MULTIPLE architecture & urbanism



Â© MULTIPLE architecture & urbanism



© MULTIPLE architecture & urbanism



© MULTIPLE architecture & urbanism