

Project

# TRANSFORMATION PAB

Architects

MARTIAT+DURNEZ ARCHITECTES

Address

Rue Maghin, 4000 Liège

Programme

Extension of spaces of life of a one-family dwelling.

About

The extension is of a level to minimize its height, to preserve the initial reading of volumes (their hierarchy) and not to seal the sight since principal volume towards the slopes.

Typology

Private houses

Status

Built

Conception

2013-2014

Delivery

2014-2015

Client

Madame et Monsieur Paulus Baron

Total budget

x

Per square meters

x

Area

+/- 9,00



Place cockerill, 18  
4000 Liège

Tél : 32 4 221 20 94

mdarchitectes@skynet.be

## OTHER PROJECTS :

MS private house  
- 2004 2007  
- Huccorgne

House L  
- 2003 2005  
- Malmedy

House HED  
- 2007 2010  
- Melen

Transformation W  
- 2008 2010  
- Villers-le-Temple



Â© L.Brandas



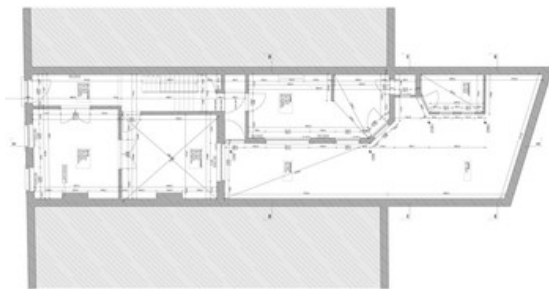
Â© L.Brandas



Â© L.Brandas



Â© L.Brandas



Â© Martiat+Durnez Architectes