

## Project

# CONSTITUTION\_JETTE

## Architects

MICHÈLE VERHELST ARCHITECT

## Address

Avenue de la Constitution 74, 1190 Jette

## Programme

The Master of the Work wanted to build his house on an existing building that it owns.

## About

It wants to create a bright, sleek and environmentally, we proposed a riser wood frame with flat roof and front roof slope reversed opening onto the gardens inside island .

In front, the berries are perfectly aligned with the existing ones. The central bay has large dimensions favoring a large bath with natural light.

The rear panel, meanwhile, is completely glazed.

The front, covered with fiber cement plates (made of Portland cement, mix lime and marl) of your bright red, has a variable horizontal geometry dominance. Red at the same time allows to resolve with existing buildings and blend in shades shutters on the lower floors.

Here we wanted to mark a general philosophy of our work will break the net but also harmonization. We wanted to offer a great lightness to the overall simplicity and enhances reading in response to the simple construction of the existing building.

## Typology

Housing (include mixed use)

## Status

Built

## Conception

2010

## Delivery

2011

## Client

Particulier

## Area

180

## MICHÈLE VERHELST architect



Rue Edmond Tollenaere, 56/13  
1020 Bruxelles

Tél : 0032479911397

info@micheleverhelst.be  
www.micheleverhelst.be

## OTHER PROJECTS :

restaurant BONBON  
- 2011 2011  
- Bruxelles

Loft Tollenaere  
- 2008 2009  
- Laeken

Lordship\_DRION  
- 2007 2010  
- Lodelinsart

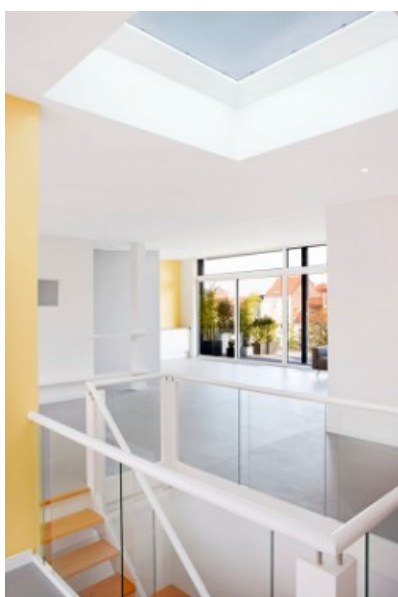
URBAN FARM  
- 2012  
- Brussels



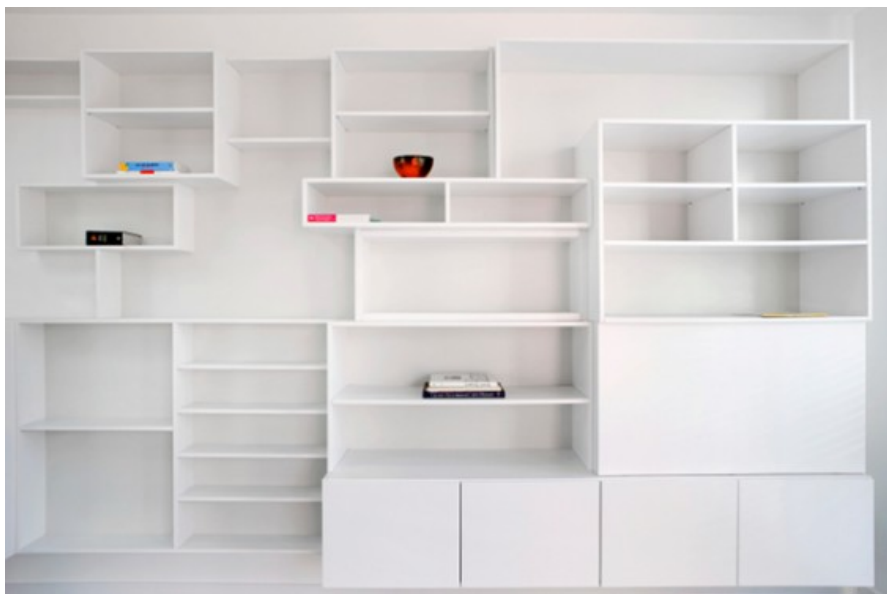
Â© Laurent Brandasj



Â© Laurent Brandasj



Â© Laurent Brandasj



Â© Laurent Brandasj