

Project

LOFT TOLLENAERE

Architects

MICHÈLE VERHELST ARCHITECT

Address

1020 Laeken

Programme

The mission that was entrusted to us was in the development of a CASCO loft located in the town of Laeken in Brussels. This loft of 150 m2 is located in the former warehouses Innovation converted into a set of 19 lofts. Located within a block, the facades overlooking courtyards, this board would be both a workplace and living space.

About

Our aim here was to visually reinforce the existing structure without making a too steeply while respecting the orientation and location of the frame. We wanted to emphasize the elementary volumes and existing structure (beams and columns visible). This large space is bounded only by three walls, three doors and a covered terrace play of transparencies and reflections. We defined the 'borders' between each type of location: professional space / private space, area night / day use area, kitchen area / living area by a set of level material, partition, and color.

The kitchen is at the same time for maximum practicality and usability important. Playing exchange with the lounge area, it contributes to the whole place to live through a work plan in stone for both gateway and border.

The covered terrace offers a wonderful setting for reflections, colors and atmospheres from one of the two courtyards. This intimate and enclosed space also separates the living area from the bedroom. This provision allows at the same time a split living spaces and an exchange between them.

We tried to juggle clothing with volumes affirming and reversing at the same time they. This approach makes this loft living space both friendly, intimate and practical.

Typology

Private houses

Status

Built

Conception

2008

Delivery

2009

Client

Particulier

Area

150

MICHÈLE VERHELST architect



Rue Edmond Tollenaere, 56/13
1020 Bruxelles

Tél : 0032479911397

info@micheleverhelst.be
www.micheleverhelst.be

OTHER PROJECTS :

restaurant BONBON
- 2011 2011
- Bruxelles

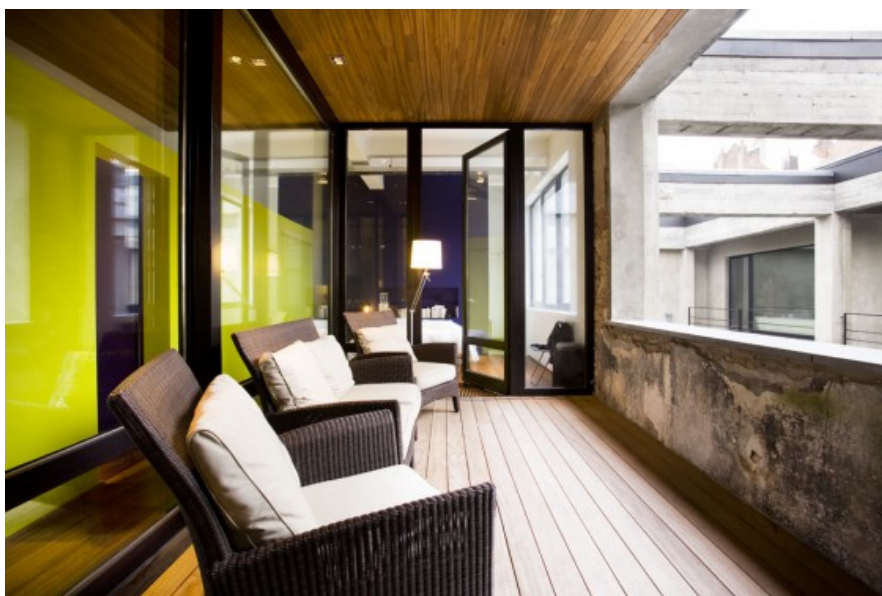
CONSTITUTION_JETTE
- 2010 2011
- Jette

Lordship_DRION
- 2007 2010
- Lodelinsart

URBAN FARM
- 2012
- Brussels



© Michele Verhelst architect



© Michele Verhelst architect



© Michele Verhelst architect



© Michele Verhelst architect



© Michele Verhelst architect