

Project

SHINJI

Architects

SPKTR ARCHITECTS

Address

Rue Notre-Dame Ouest 1726, QC H3J 1M3 Montreal

Programme

Interior design of a gourmet Japanese restaurant

Typology

Hotels, restaurants, bars

Status

Built

Conception

2014

Delivery

2015

Client

-

Total budget

800 000.00

Per square meters

-

Architects

Bruno Braen

Architects

Luc Pécourt

SPKTR

Avenue Coghen 144
1180 Bruxelles

info@spktr-architects.be
www.spktr-architects.be

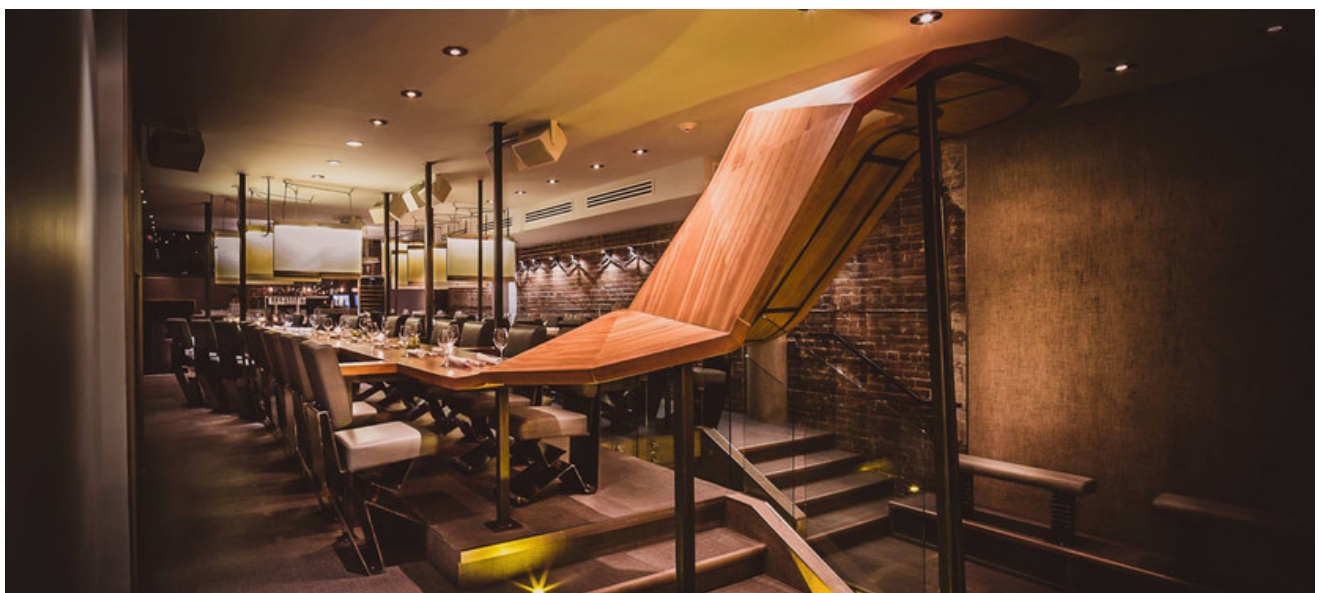
OTHER PROJECTS :

Identity(-ies)II
- 2010 2011
- Anderlecht

Beau-Chêne
- 2010
- Mouscron

Charli salé
- 2015 2015
- Bruxelles

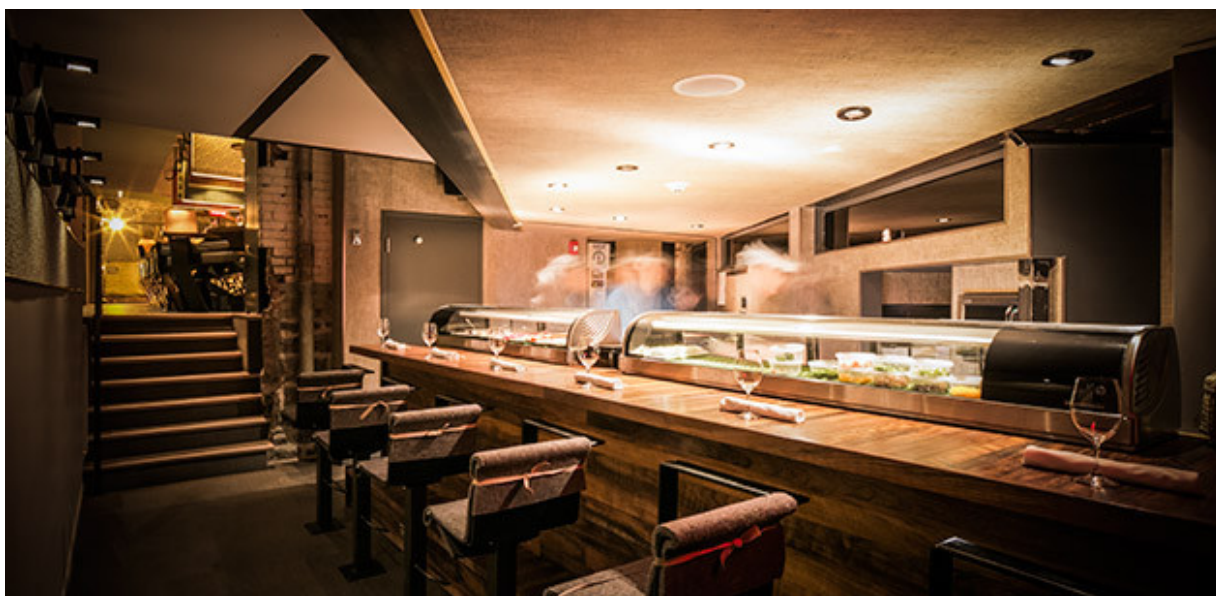
NOTKINS
- 2014 2015
- Montréal



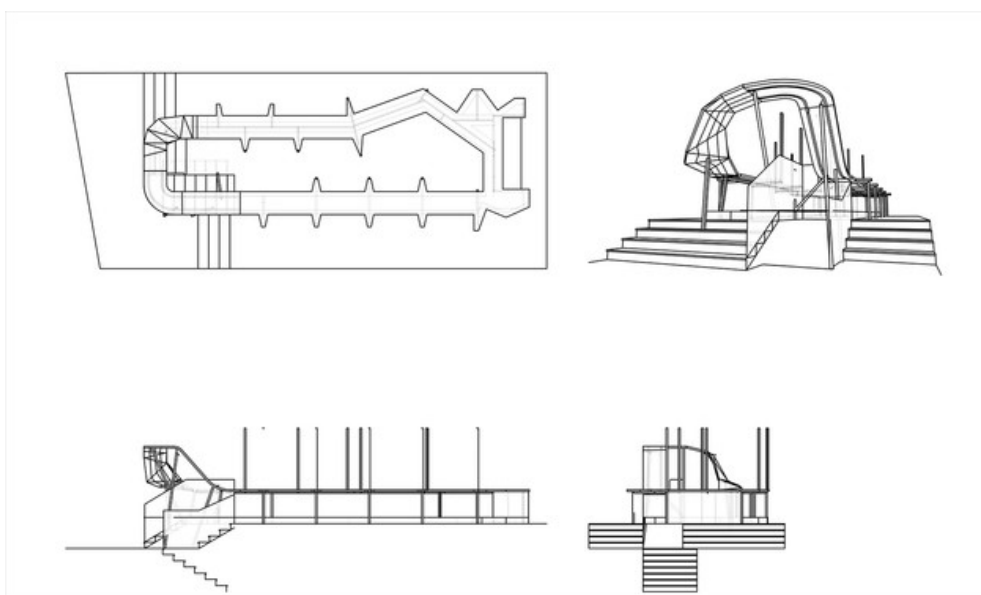
Â© SPKTR Architects



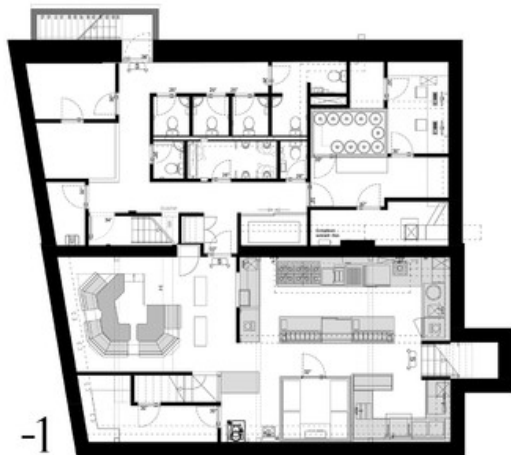
Â© SPKTR Architects



Â© SPKTR Architects

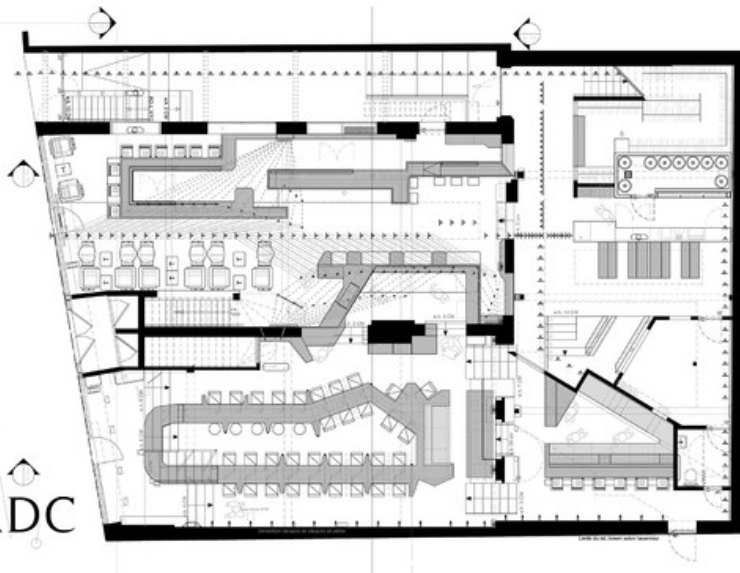


Â© SPKTR Architects



-1

RDC



Â© SPKTR Architects