

## Project

# VERVAN

## Architects

V2W ARCHITECTES SPRL

## Address

Uccle

## Programme

two-family villa in Uccle

## About

This project of a two-family villa develops itself as a duality, almost as a conflict between the organization of spaces and their external expression.

The interior is as an answer to the question "how to assemble two sensitivities, two intimacies, two lifestyles, and this within a single architecture? ". Each one sees his functions get into place making the most of their internal relations and external environment, without any sacrifice of quality. The interior spaces stretches, come to seek the light, views, or on the contrary, declines to find more privacy in this way and define an outgoing volume.

By contrast, the outer shell comes to connect and attach the set of spaces which seems to have flourished individually. In the manner of a continuous band in which voids have been performed, the facade is literally wrapped around the two houses, giving an external expression of architecture firmly united.

## Typology

Housing (include mixed use)

## Status

Built

## Conception

2005

## Delivery

2008

## Client

Vervan S.A.

## Area

700



Avenue du Prince d'Orange, 36A  
1180 Bruxelles

Tél : +32 2 375 45 47

info@v2w.be

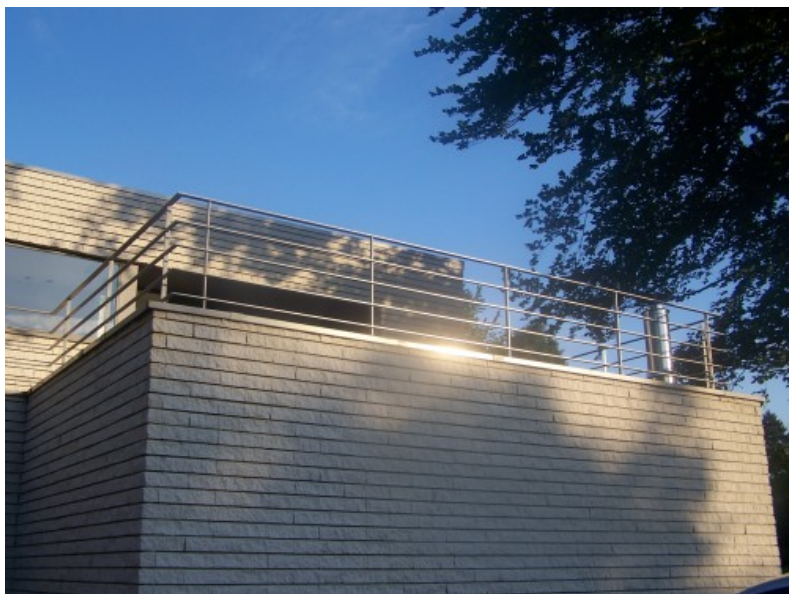
<http://www.v2w.be/>

## OTHER PROJECTS :

Orange36A  
- 2005 2007  
- Bruxelles

Rotsaert  
- 2006-2008 2009  
- Wezembeek

Ecocity  
- 2009 2012  
- Bruxelles



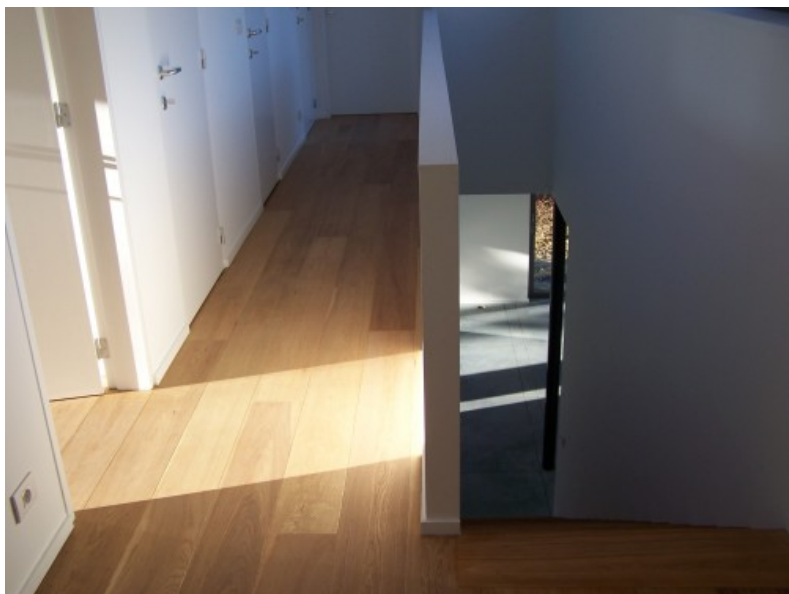
© V2W Architectes sprl  
© © V2W Architectes sprl



© V2W Architectes sprl  
© © V2W Architectes sprl



© V2W Architectes sprl  
© © V2W Architectes sprl



Â© V2W Architectes sprl  
Â© Â© V2W Architectes sprl



Â© V2W Architectes sprl  
Â© Â© V2W Architectes sprl