

Project

REINE ASTRID - PUBLIC SQUARE

Brussels / Paris

Architects

WHY ARCHITECTURE

Address

4600 Visé

info@whyarchitecture.eu
http://www.whyarchitecture.eu

Programe

Redevelopment of a public square and its roadways

OTHER PROJECTS :

About

The proposed plan for the Place Reine Astrid has four parts, foregrounding the needs of visitors and users. Our approach was to re-introduce an open surface, allowing the square to be re-appropriated.

1. Horizontal definition.

The gradual terracing of the exterior sides gives the square an outline that delimits a specific, protected and defined space. This approach suggests, naturally and clearly, a link between the upper and lower parts of the city.

2. Reorganisation of the square's flows and accessibility

3. Connection of the square's two entities

A generous pedestrian walkway provides a physical and visual link between the two entities.

4. A greening of the space and architectural lighting

A green planted roof ? a functional and environmentally-friendly element ? provides shade, shelter and protection from wind and rain.

Its surface collects rainwater, which can be reused for upkeep of the square.

Green planted elements, lighting and paving follow a diagonal pattern, reminders of the square's natural differences in elevation and extending an invitation to the nearby shopping district.

Generis - Residential towers
- 2010-2011
- Chengdu

Ecole Hôtelière - Hotel boarding school
- 2009-...
- Namur

Waterloo - Housing and commercial space
- 2011-...
- Uccle

Jardin de Poche - Installation
- 2004 2004
- Bruxelles

Typology

Landscape, urban areas

Status

Concept proposal

Conception

2009

Client

Ville de Visé

Total budget

2.320.000 ?



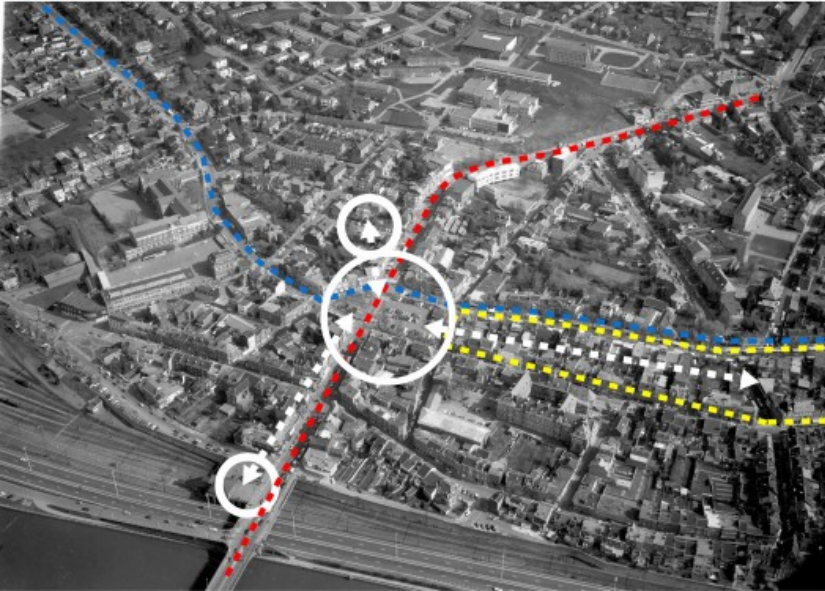
Â© Quick It



Â© Quick It



Â© Quick It



Â© Quick It



Â© Quick It