

Project

REHABILITATION OF THE ANCIENT PATHÉ PALACE

Architects

AA-AR, ATELIER D'ARCHITECTURE ALAIN RICHARD

Address

Boulevard Anspach, 85, 1000 Bruxelles

Programme

Cinema and art complex :
4 screens
cafe/bar-restaurant
reception area
cultural shop
offices and meeting room
staff accomodation

About

In the heart of Brussels, the complete renovation of the former Pathé Palace has created a multicultural exchange centre. The centre consists of a cinema complex of four screens, primarily dedicated to art house films, with a pedagogical section and a variety of event activities.

Creating space, by disassembling and thoughtfully evacuating elements, allowed the introduction of natural light into the complex, as well as revealed and highlighted the value of the preserved elements.

The foyer took full advantage of the additional open space to become a multifunctional place enabling multicultural exchanges. The open space allows for the unrestricted flow of ideas, thoughts and people.

The foyer, grew to become the hub of the building, brought to life by the different spaces' atmospheres (bar, shop, kiosk) from the basement to the upper levels which gives access to the screens.

Connecting seven floors, a glass tower manage vertical traffic and access to the screens. It became the boarding area that leads spectators to the adventure of the movies, via the screens entrance tunnels.

The Palace is also a hub for the neighbourhoods. The creation of a revealing opening towards the district of Saint-Géry transforms the rear façade of the old theatre into a piece of urban order where signage allows artistic events as well as cultural exchanges.

Typology

Culture

Status

Built

Conception

2006-2012

Delivery

2018

Client

asbl Le Palace | Fédération Wallonie-Bruxelles



Place Coronmeuse 14
4040 Herstal

Tél : 32 4 344 17 39

atelier@aa-ar.be
<http://www.aa-ar.be>

OTHER PROJECTS :

Community and cultural centre
- 2004-2005 2007
- Esneux

Public access to the Coteaux de la Citadelle
- 2003 2005
- Liège

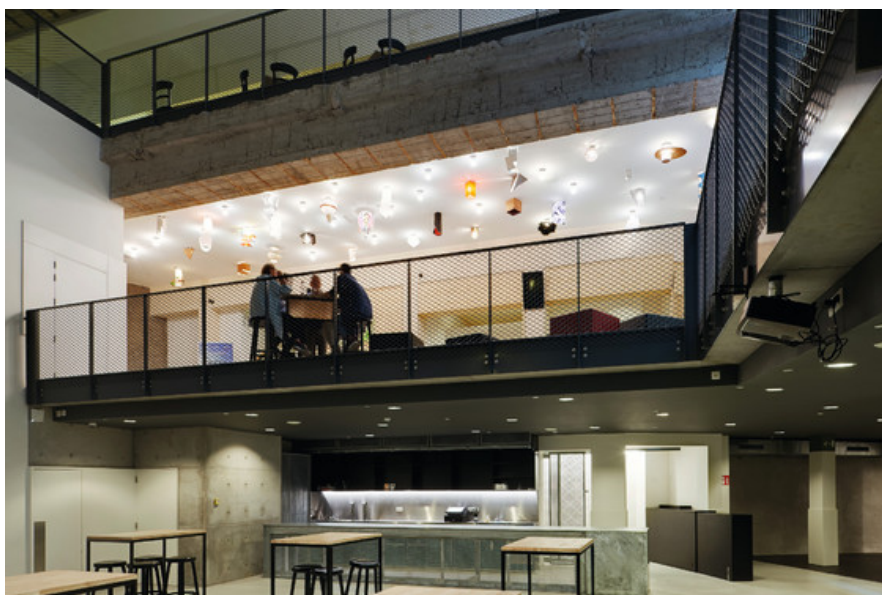
Business incubator Spi+
- 2005-2006 2008
- Liège

Riva Bella High school
- 2008-2009 2010-2012
- Braine l'Alleud

Total budget	9.000.000
Per square meters	2.000
Area	1.535
Stability	Ney & Partners sa
Special techniques	JZH & Partners srl
Special techniques	Seca Benelux sprl
Acoustic	A-Tech acoustic technologies sa
Lightning	Henriette Michaux
Artists	Pierre Toby
Others	conception salles : bureau d'études Pierre Beugnier sa
Others	fire engineering : bureau d'études Delta G.C. sa



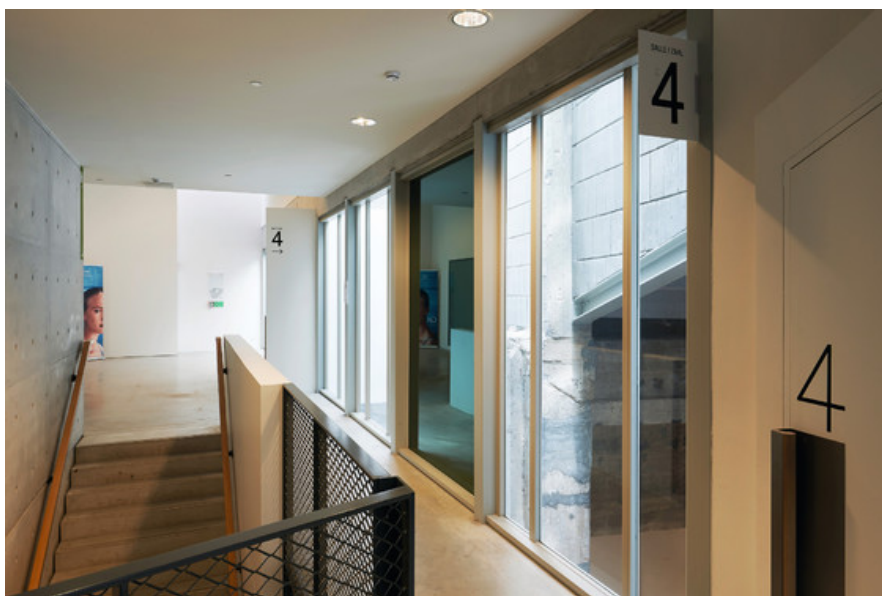
Creating space, allowed the introduction of natural light into the complex, revealed the value of the preserved elements
 Â© Alain Janssens



The foyer, a multifunctional place enabling multicultural exchanges
 Â© Alain Janssens



The foyer, a multifunctional place enabling multicultural exchanges
 Â© Alain Janssens



The glass tower manage vertical traffic and access to the screens
 Â© Alain Janssens



The bar-restaurant in relation with the foyer
 Â© Alain Janssens