

Project

RIVA BELLA HIGH SCHOOL

Architects

AA-AR, ATELIER D'ARCHITECTURE ALAIN RICHARD

Address

Square Ouistreham Riva Bella, 1420 Braine l'Alleud

Programme

The new semi-prefabricated building houses two institutions, Riva Bella High School and the Further Education College of Braine -l'Alleud. Each occupies its own premises and shares some facilities, services and spaces. The use made of the building therefore depends on the respective opening hours, daytime for the high school and evening for the college of further education.

Programme:

- Classrooms, labs, hairdressing, IT, kitchens
- Study Room
- Library
- Teaching restaurant
- Entrance lob

About

When the decision was taken to develop the semi-prefabricated building, we were driven by a strong conviction: the need to adopt an ambitious educational and cultural approach that finally moves away from the age of the disposable, that helps to move on from the age of recyclable and that moves towards the age of the renewable. Our definition of renewable is "to renew by transforming".

In fact, by renewing we will not just be recycling the materials of the semi-prefabricated building but also its architecture. By reusing the ways and means with which it is put together, a new space will be produced.

A rigorous and comprehensive study of the existing structure and of the immediate context made it possible to define different adaptation strategies.

By means of a cut and fill operation, the relationship between the building and its immediate environment is transformed, enhancing the relationship between the school and the neighbourhood.

An entrance for each school is positioned at each end of the structure. Depending on the time of day and needs of the moment, the spaces assigned to each institution expand and contract alternately to allow the appropriation of the public areas.

All classrooms are east facing and look out over the inside of the campus. The other functions take place on the west side of the building, towards the city, with each housed in a specific space, whether in terms of its morphology, size, views and light flows or its public face.

Typology

Education

Status

Built

Conception

2008-2009

Delivery

2010-2012

Client

SPABS Brabant Wallon - Communauté Française



Place Coronmeuse 14
4040 Herstal

Tél : 32 4 344 17 39

atelier@aa-ar.be
<http://www.aa-ar.be>

OTHER PROJECTS :

Community and cultural centre
- 2004-2005 2007
- Esneux

Public access to the Coteaux de la Citadelle
- 2003 2005
- Liège

Business incubator Spi+
- 2005-2006 2008
- Liège

Organic farm shop
- 2010 2012
- Lantin

Total budget	3800000
Per square meters	900
Area	4200
Stability	NEY + Partners
Special techniques	SECA Benelux
	Double Page



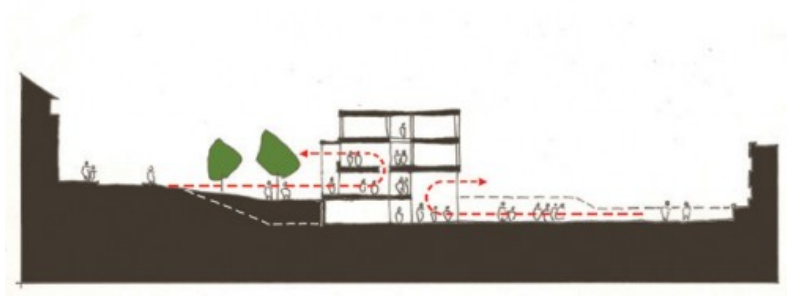
Main facade
Â© Nicolas Bomal



entrance hall
Â© Nicolas Bomal



Atrium
Â© Nicolas Bomal



Â© aa-ar, atelier d'architecture alain richard