

## Project

# BRUSSELS GREENBIZZ

## Architects

ARCHITECTEASSOC.

## Address

Rue Dieudonné Lefèvre, 37, 1020 Bruxelles (Laeken)

## Programme

Environmental Incubator, Workshops and Offices rue Lefèvre in Brussels.

## About

Located on a long-abandoned and polluted 4-hectare industrial site near the city center, BRUSSELS GREENBIZZ is part of a large-scale 14-hectare urban development called TIVOLI, publicly funded by European FEDER funds and CITYDEV. TIVOLI includes both housing (+/-450 units) and economic facilities in which GREENBIZZ (12.000sqm) holds the pivotal role.

It includes workshops for environment-oriented businesses and spin-offs (low-energy), an incubator (nzeb) and office space (passive), plus an array of extra amenities open to the public including exhibition space and café. Two principal volumes (phases I and II) articulate a new public plaza offering transition between the more industrial quartier south and the more urban and residential one north. Sitting in limbo between these apparently opposed activities, the project's role is to create synergy: encouraging visitors as well as occupants, confirmed specialists as well as budding pioneers-to-be, adults as well as children to be part of the collective emulation housed within. GREENBIZZ's dynamic, generous, and permeable organization, its mission to create responsible employment, and its clearly expressed sustainable identity all carry the same message: sustainable design can and must be about much more than implementing energy-efficiency and responsible material-sourcing ? sustainable design must be about implementing hope.

avenue de l'Observatoire 11E  
1180 Bruxelles

Tél : 32 2 410 76 77

info@architectesassoc.be  
www.architectesassoc.be

## OTHER PROJECTS :

### EMPEREUR

- 2008 2014  
- Bruxelles

### BELMONT COURT

- 2002 2006  
- Bruxelles (Etterbeek)

### AEROPOLIS II

- 2005 2010  
- Bruxelles (Schaerbeek)

### NATIONAL THEATRE

- 2000 2004  
- Bruxelles

## Typology

Offices (include mixed use)

## Status

Built

## Conception

2012

## Delivery

2016

## Client

Citydev.brussels

## Total budget

12 058 000

## Per square meters

1005

## Area

12 000 m2 HS

## Stability

Setesco

## Special techniques

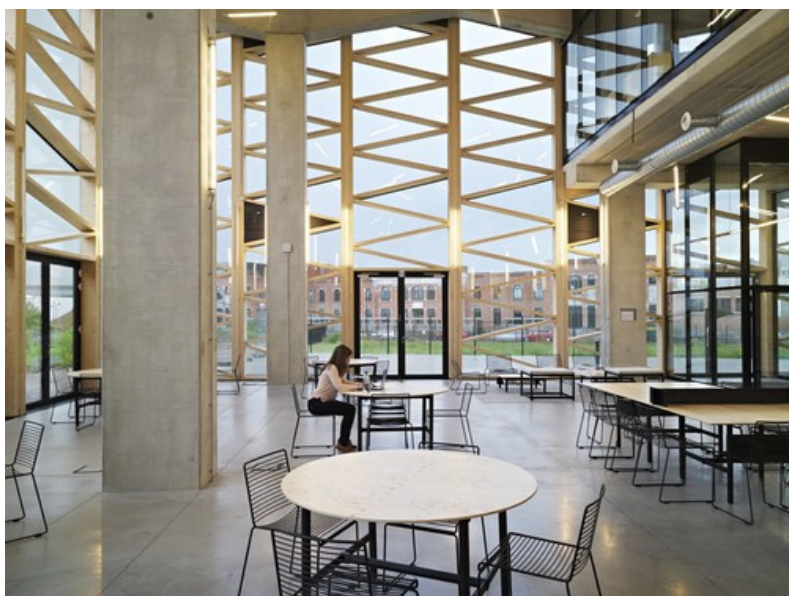
Istema - FTI - Cenergie

## Others

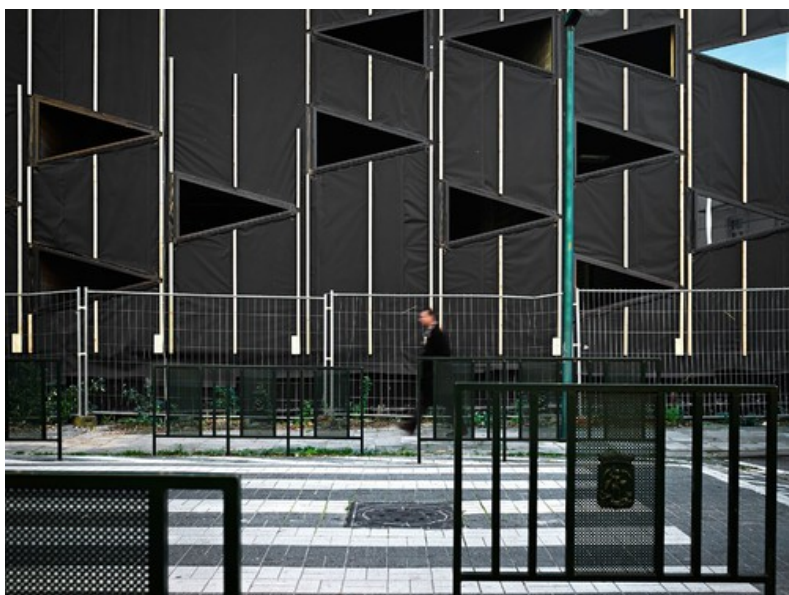
CEI-de Meyer



Â© architecteassoc.



Â© architecteassoc.



Â© architecteassoc.



Â© architecteassoc.



Â© architecteassoc.