

## Project

# EXTENSION OF PAX BOOKSTORE

## Architects

ATELIER D'ARCHITECTURE ALOYS BEGUIN-BRIGITTE MASSART  
SPRL

## Address

4 place Cockerill, 4000 Liège

## Programme

Fourth phase of work : Extension of the bookstore on the first floor of No. 4 and 6, Place Cockerill.  
Improved circulation and accessibility to different floors, installation of a lift.

## About

From 1996 to 2012, the spatial expansion of PAX bookstore served as the clearest sign of its questioning, of its desire for openness, development and affirmation of its public image. By successively taking over four urban buildings with their ground-floor, sometimes their basement and upper floors, as well as their retail frontages, the project gradually made it possible to resolve issues of spatiality, functionality and accessibility without affecting the atmosphere valued by its users.

Over 14 years and four redevelopments, the bookstore's surface has grown from 80m<sup>2</sup> to 670m<sup>2</sup>, spread over three floors fluently communicating with each other.

The result allows users to wander through different arrangements of books and spaces: A small town within the town, with its paths, its intersections, its meeting places, the thrill of discovery, shadow and light ...

From the outset, the idea was to come up with a design that would enhance the original character of the buildings, with the aim of updating them in the long-term rather than pursuing purely commercial considerations. The project demonstrates that these objectives are not incompatible.

## Typology

Shopping (include mixed use)

## Status

Built

## Conception

2010-2011

## Delivery

2012

## Client

Librairie Pax

## Total budget

310.000? HTVA

## Per square meters

1.200?/m<sup>2</sup> HTVA

## Area

260m<sup>2</sup>

## Architects

collaborateur : Alix Welter

## Stability

Bureau d'études Greisch



28 rue Grandgagnage  
4000 Liège

Tél : +32 4 222 14 30

beguin.massart@gmail.com  
<http://beguin-massart.be>

## OTHER PROJECTS :

Extension of the Treasury of the  
Cathedral  
- 2004-2007 2016  
- Liège

Renovation and extension of the  
Trinkhall Museum  
- 2008 2020  
- Liège

Esplanade Saint Léonard  
- 1994 2001  
- Liège

Scenography / design  
- 1999/...  
- Liège



Â© Alain Janssens



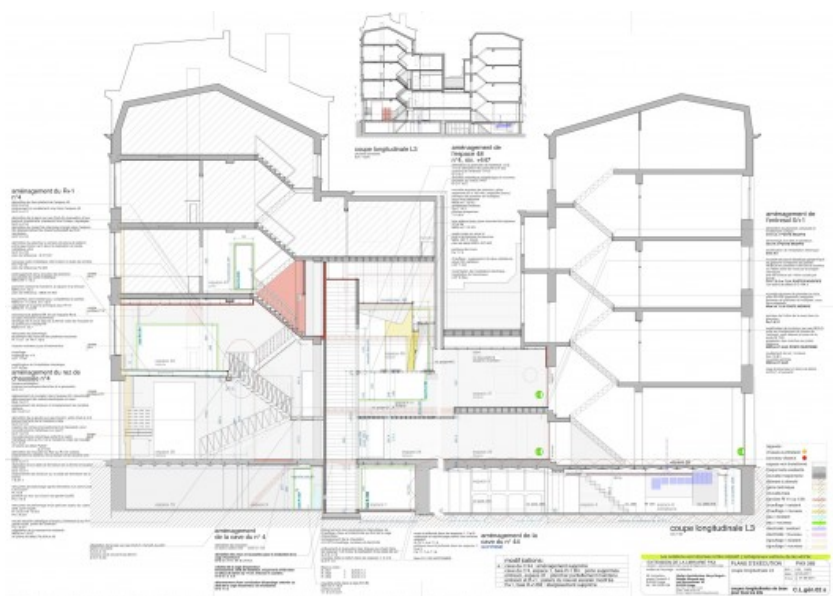
Â© Alain Janssens



Â© atelier d'architecture Aloys Beguin-Brigitte Massart sprl



Â© Alain Janssens



Â© Beguin-Massart