

Project	488_FWA	atelier d'architecture mathen
Architects	ATELIER D'ARCHITECTURE MATHEN	rue margot 6 1435 corbais
Address	Chaussée des Nerviens 20, 1300 Wavre	Tél : 010 655 952
Programe	Building of 20 apartments 2 rooms of social type rental.	architectes@mathen.eu www.mathen.eu
About	<p>The building has 20 apartments divided in 5 levels on a ground floor dedicated to the halls special cellars and technical rooms. A common meeting room at the building is available at this level.</p> <p>The two reception halls allow to distribute 10 apartments each, each landing, accessible by elevator, serves two apartments per level. An emergency staircase leading to each of the lobbies completes the vertical circulation device.</p> <p>The apartments are of the crossing type: the living rooms facing south benefit from a wide sunshine, the northern rooms enjoying the tranquility of the park willow.</p> <p>A contemporary touch is also brought to the composition of the facades by the random arrangement of the windows equipped, or not, of railings.</p> <p>Particular attention has been paid to the energy issue by focusing on simple technical means that are sustainable over time and easily usable by future inhabitants.</p>	OTHER PROJECTS :
Typology	Housing (include mixed use)	439_ISM - 2008 2013 - Rèves
Status	Built	911_AGC - 2010 - - Louvain-la-Neuve
Conception	2016	485_DEF - 2015 2017 - Walhain
Delivery	2018	495_CRE - 2015 n.c. - Evere
Client	public	
Total budget	n.c.	
Per square meters	n.c.	
Area	2227	



Photography : Pedro Correa
Â© atelier d'architecture mathen



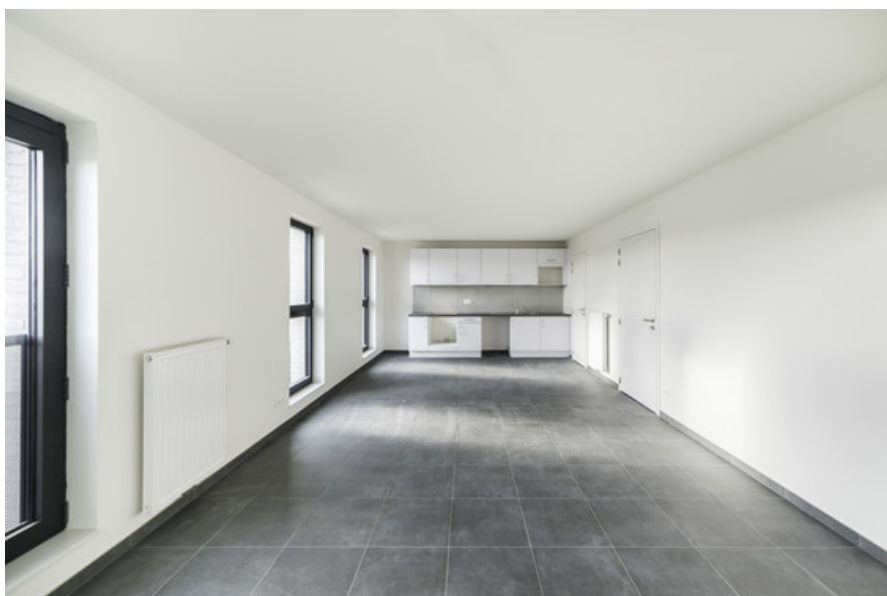
Photography : Pedro Correa
Â© atelier d'architecture mathen



Photography : Pedro Correa
Â© atelier d'architecture mathen



Photography : Pedro Correa
Â© atelier d'architecture mathen



Photography : Pedro Correa
Â© atelier d'architecture mathen