

## Project

# NIVEZÉE HOUSE

## Architects

BRUUM ARCHITECTURE

## Address

Nivezée-Spa

## Programme

Single family Home.

## About

Located on the outskirts of a rural entity, this single-family dwelling integrates in a contemporary language the typological codes of this one: perpendicular volume in direct contact with the street, simple volumes, entrance courtyard set back from the street, natural and raw material.

The slight slope of the land is integrated by a set of stairs and outdoor terraces, setting the volume in its place and creating a complex architectural promenade that gradually takes the visitor into a tangle of beams and columns made of concrete and wood. Thus, past the apparent simplicity of the exterior composition, the interior spaces reveal all their ambiguities: at the same time fully in contact with the outside but systematically hampered by columns, limited perspectives, built masses ... that create a feeling of indoor unit, a kind of abstract landscape. This unit is further increased by the main staircase and openwork walkways that cross the two parts of the volumes and provide spatial continuity between the different spaces by their continuous material presence.

The result of this composition is a constantly changing home (light, perspective, feeling ...) offering these inhabitants a daily renewal of their living environment.

## Typology

Private houses

## Status

Built

## Conception

2013

## Delivery

2018

## Client

Privé

## Total budget

650000

## Per square meters

2000

Rue Xhovémont 45  
4000 Liège

Tél : 0478 441041

mp@bruumarchitecture.be  
<http://www.bruumarchitecture.be>

## OTHER PROJECTS :

Jonquilles House  
- 2011 2016  
- Liège

Infrastructure Nature Braives  
- 2018 2021  
- Braives

Rural industry - Héron  
- 2011 2016  
-

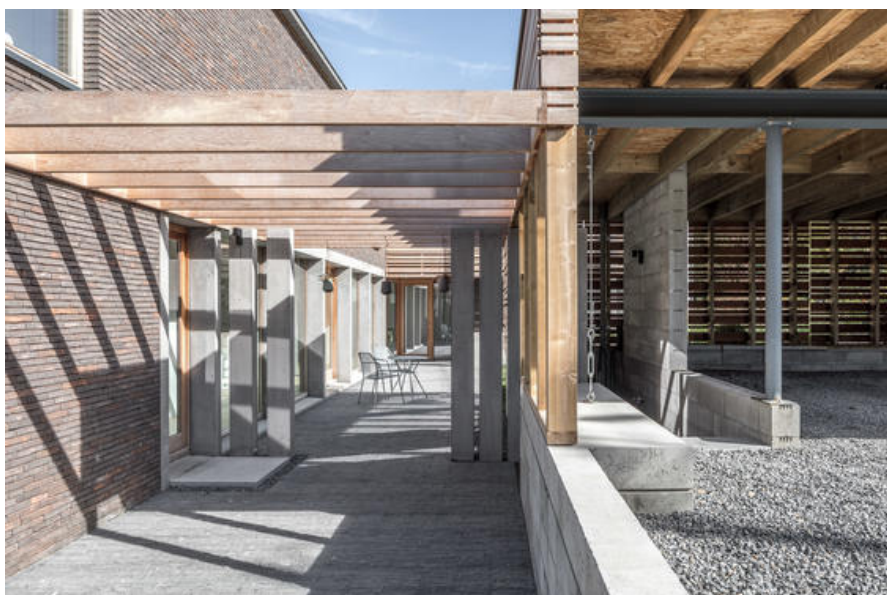
Rural industry - Héron  
-  
-



Inside view  
 © S. Defourny



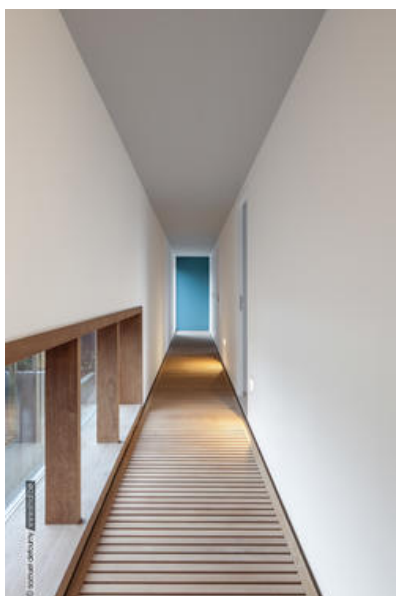
Frontal façade  
 © S. Defourny



Inside court view  
 © S. Defourny



Inside court view  
Â© S. Defourny



Inside view  
Â© S. Defourny