

Project

PASSIVE HOUSE W.

Architects

CORBACREATIVE

Address

rue haute 19, 5530 Dorinne

Programme

Passive house made of massive wood panels with an automated installation for the management of energy.

About

The South oriented plan is designed to avoid the shade of neighbor's constructions. The uses of space follows the natural rythm of sun progression. The bedrooms are illuminated with the morning light and the livingroom receive the light of the setting sun.

The woodmassive construction carry a skin of grey bricks to increase its massivity and recall regional landscape designed by numerous caves.

Contrast between contents and envelope is accentuate by choosing to let the wood visible as finition in the internal spaces. Triple glazing windowframes are made of wood coated with a thin aluminum sheet, in the same logic of two-sided fabric.

Roof modeling is designed to maximize the solar pannel efficiency and to limit the enveloppe area.



rue des Brasseurs 28/0010
5000 Namur

Tél : ++32 (0)473 537 413
Fax : /

corbacreative@skynet.be
<http://www.corbacreative.be>

OTHER PROJECTS :

Typology

Private houses

Status

Built

Conception

2011

Delivery

2014

Client

M. et Mme Wilputte

Total budget

460 000

Per square meters

1200

Area

220

Maison Passion I
- 2009 2011
- Namur

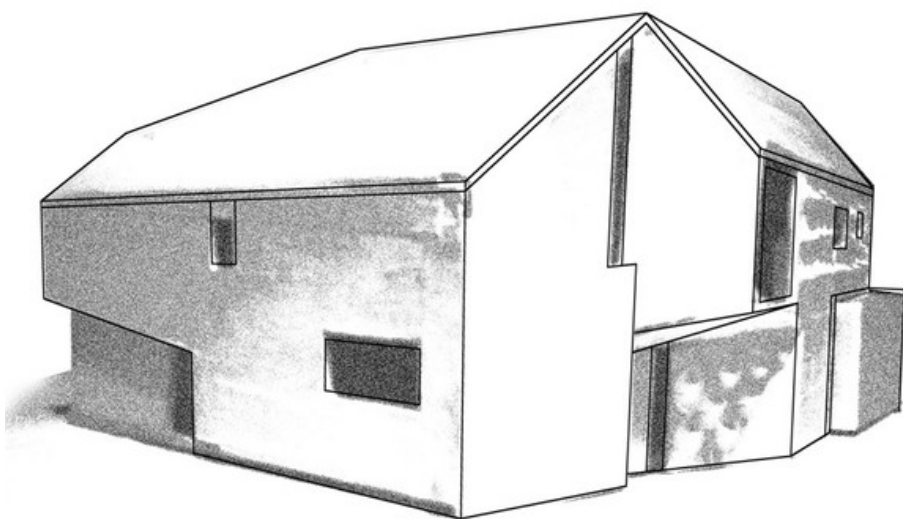
Villatoile
- 2006 2008
- Anseremme

Maison Passion II
- 2014 2016
- Namur

Huy'school
- 2017
- Wanze



work in progress
Â© corbacreative



3D
Â© corbacreative



Â© corbacreative



Â© corbacreative



Â© corbacreative