

Project

LOW ENERGY HOUSE - K29

Architects

FP ARCHITECTES SC SPRL

78 / 5 Rue Defacqz
1060 Bruxelles

Address

lindekensweg, 1640 Rhode-Saint-Genèse

Tél : 0032 2 648 96 01
Fax : 0032 2 544 14 58

Programme

House
Low-energy.
Techniques: Insulation reinforced, heating floor, thermal solar production, VMC, home automation installation

info@fp-architecture.com
www.fp-architecture.com

OTHER PROJECTS :

About

Implantation of the House was investigated following landscape insertion in agreement with improved guidance promoting natural energy intakes with solar gains. The system of foundations implemented is of type deep foundations on bored piles. By its characteristic of implementation, this technique to ensure perfect insulation, continuous, at the level of the beams of foundations avoiding all risks of thermal bridge. Technical options and developed materials implemented.

24 housing "low energy"
- 2009
- Eghezée

Building of 4 housing "low energy"
- 2009 2011
- Bruxelles

Typology

Private houses

Eco-renovation of a building of social housing
- 2010 2012
- Liège

Status

Built

Conception

2009

Delivery

2011

Loft
- 2008 2009
- Bruxelles

Client

Privé

Total budget

348.500 euros HTVA

Area

220

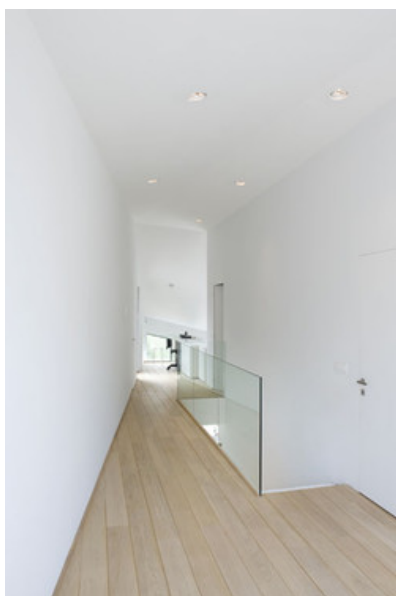
Stability



Â© StÃ©phanie Bodart



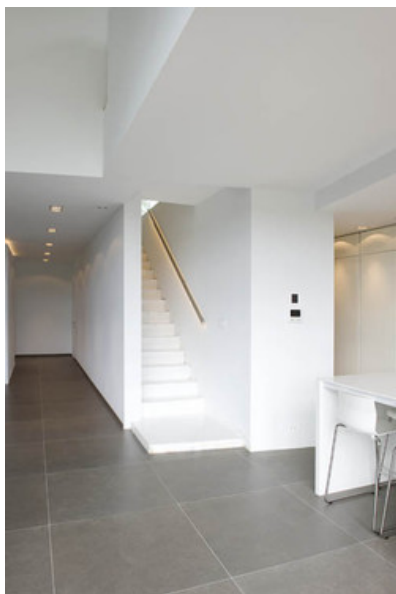
Â© StÃ©phanie Bodart



Â© StÃ©phanie Bodart



Â© StÃ©phanie bodart



© Stéphanie Bodart