

Project

ANS-ALLEUR HIGHSCHOOL

Architects

HE-ARCHITECTES

rue Ernest de Bavière 8
4020 Liège

Address

Rue Georges Truffaut, 4432 Alleur

Tél : 32 4 349 00 53

Programme

Construction of an highschool in Ans - 25 classrooms and a technical learning center

info@he-architectes.be
http://www.he-architectes.be

About

The location on the road frontage gives the institution greater visibility to the community. We were careful to preserve the wooded and airy character of the parcel while proposing an implantation that gives meaning to the upper part of the site. We also took care not to close the block and to allow views and crossings.

OTHER PROJECTS :

The conceptual choices were oriented towards a compact and rational device to optimize the operation and the costs of construction and maintenance. Particular attention was paid to the qualification of spaces, their cohabitation and the links between them. The long façades provide pleasant views of the wooded site. The classrooms facing the street host "living" functions such as drawing and applied office automation: the know-how and specificity of the school are shown. We emphasized a logical and clear distribution of the different programmatic sub-assemblies in order to offer a welcoming, user-friendly and reassuring building.

Henquet-Decocq extension
- 2007 2009
- Fexhe-Slins (Juprelle)

Geurts transformation
- 2008-2009 2010
- Bressoux (Liège)

Mignonsin-Colla extension
- 2008-2009 2011
- Liège

Expansion and renovation of S.A.J.
Marche-en-Famenne
- 2010-...
- Marche-en-Famenne

Typology

Education

Status

Built

Conception

2013

Delivery

2020

Client

C.F.W.B. / A.G.I. Liège

Total budget

5 160 000

Area

3900

Stability

Stabili.D sprl

Special

LCTS sprl

techniques

Acoustic

ATS sprl

NN Studio



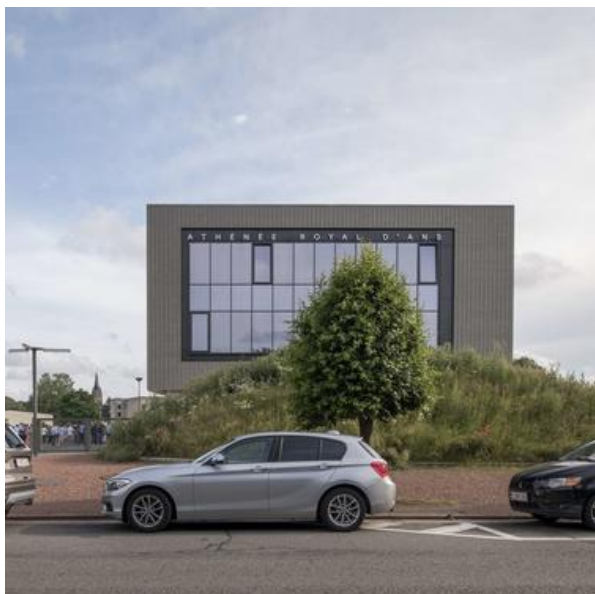
Â© Nicolas Bomal



Â© Nicolas Bomal



Â© Nicolas Bomal



Â© Nicolas Bomal



Â© Nicolas Bomal