

Project

ENTRANSPIRENC

Architects

HELIUM3 ARCHITECTURES

Address

Tilleur

Programme

Notary office's extension

About

The project involves the extension of an office building (notary office).
The extension takes place on the building's east side, it creates 4 spacious offices open to the open-space and a meeting room.

The long facade of the extension has large windows to keep transparency's image of the notary's job. However, some perforated "skins" of expanded metal are placed in front of some glass surfaces to play on the degrees of transparency and to give a confidentiality for the customers towards the outside with a limitation of views.

Expanded metal creates the connection with existing offices. In fact, the galvanized steel is used in several places (doors, baseboards, etc.) in the existing building which has a decidedly industrial look.

This material is also present on the sun visor which is added on the south side of the existing building. In addition to make the connection between existing and new building, this visor limits overheating which was currently present in the open-space.

Typology

Offices (include mixed use)

Status

Built

Conception

2012

Delivery

2014

Architects



rue des Vennes 312-1/3
4020 Liège

Tél : 04 285 93 87
Fax : 04 285 93 87

info@helium3.be
www.helium3.be

OTHER PROJECTS :

Control tower
- 2010 2011
- Mettet

Hall, showroom and offices
- 2010 2011
- Gembloux

Havelange Cultural house
- 2010
- Havelange

Recycl'Air housing
- 2010
- Seraing



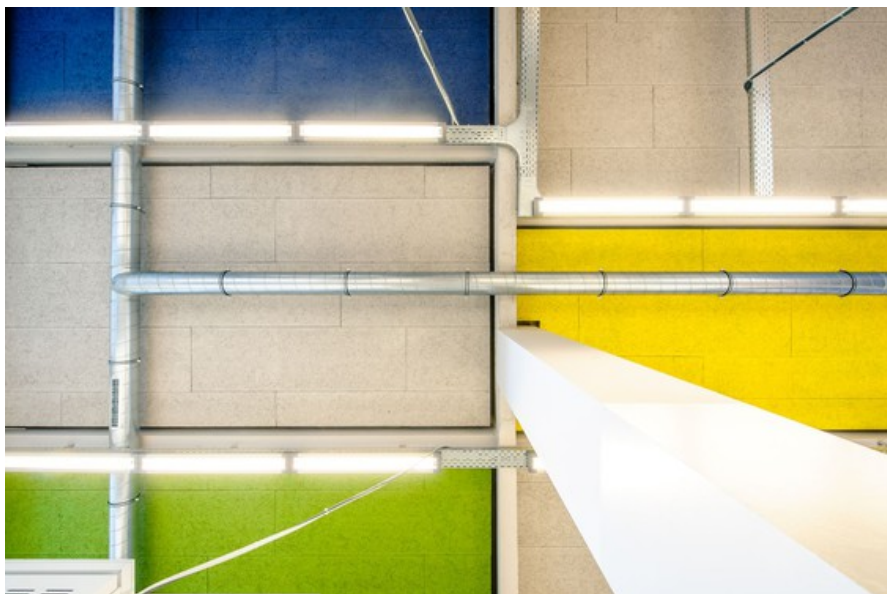
Â© helium3 architectures



Â© helium3 architectures



Â© helium3 architectures



Â© helium3 architectures



Â© helium3 architectures